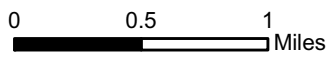


# Proposed McKay Tract Community Forest



1:48,000

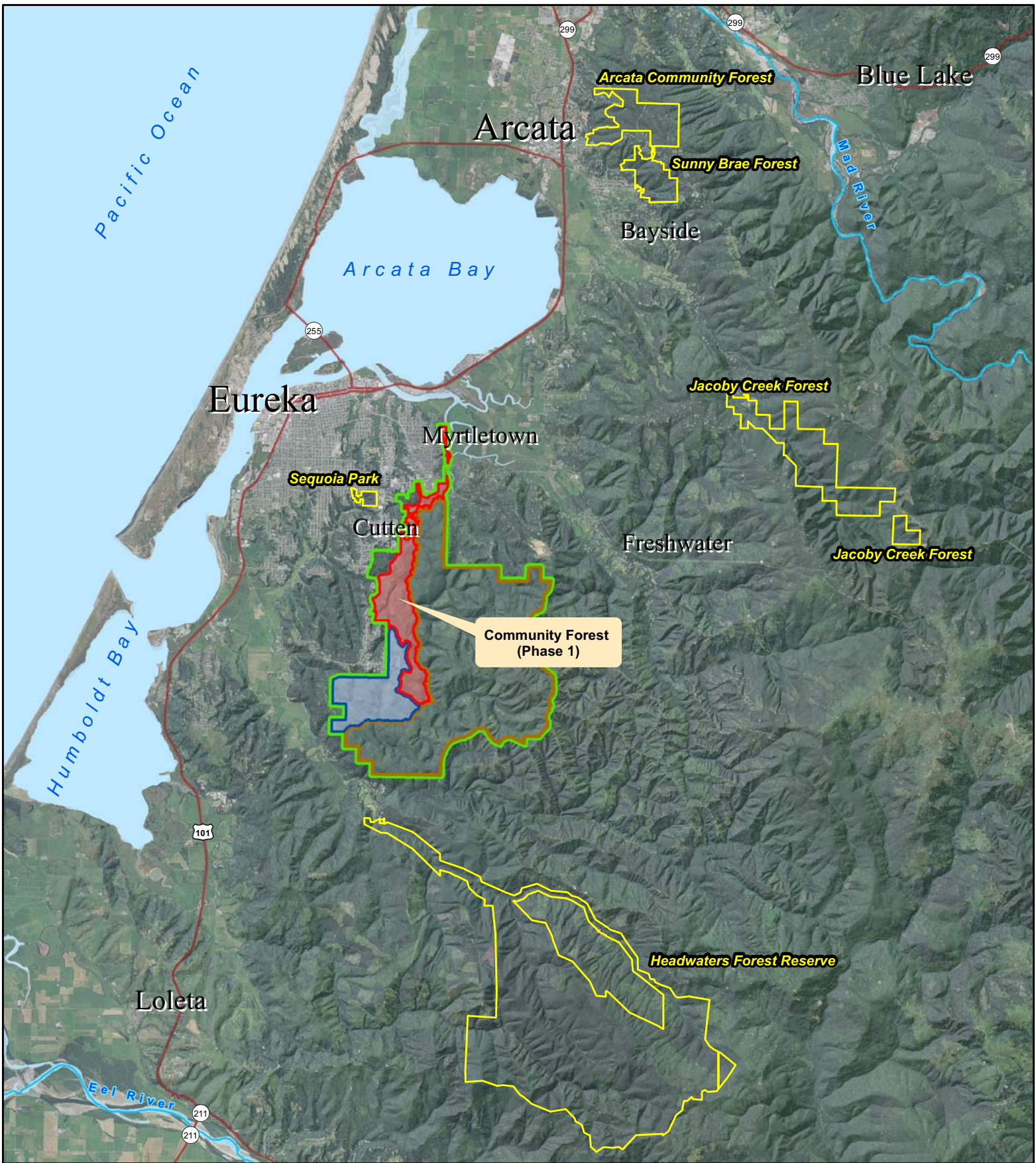
## Legend

- Proposed Community Forest (Phase 1)
- Potential Community Forest Additions (Phase 2)
- Conservation Easement (Green Diamond Retains Ownership)
- McKay Tract

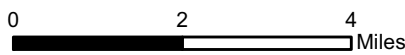
Imagery: NAIP 2012

Prepared: April 3, 2014

**Overview Map**



## Proposed McKay Tract Community Forest

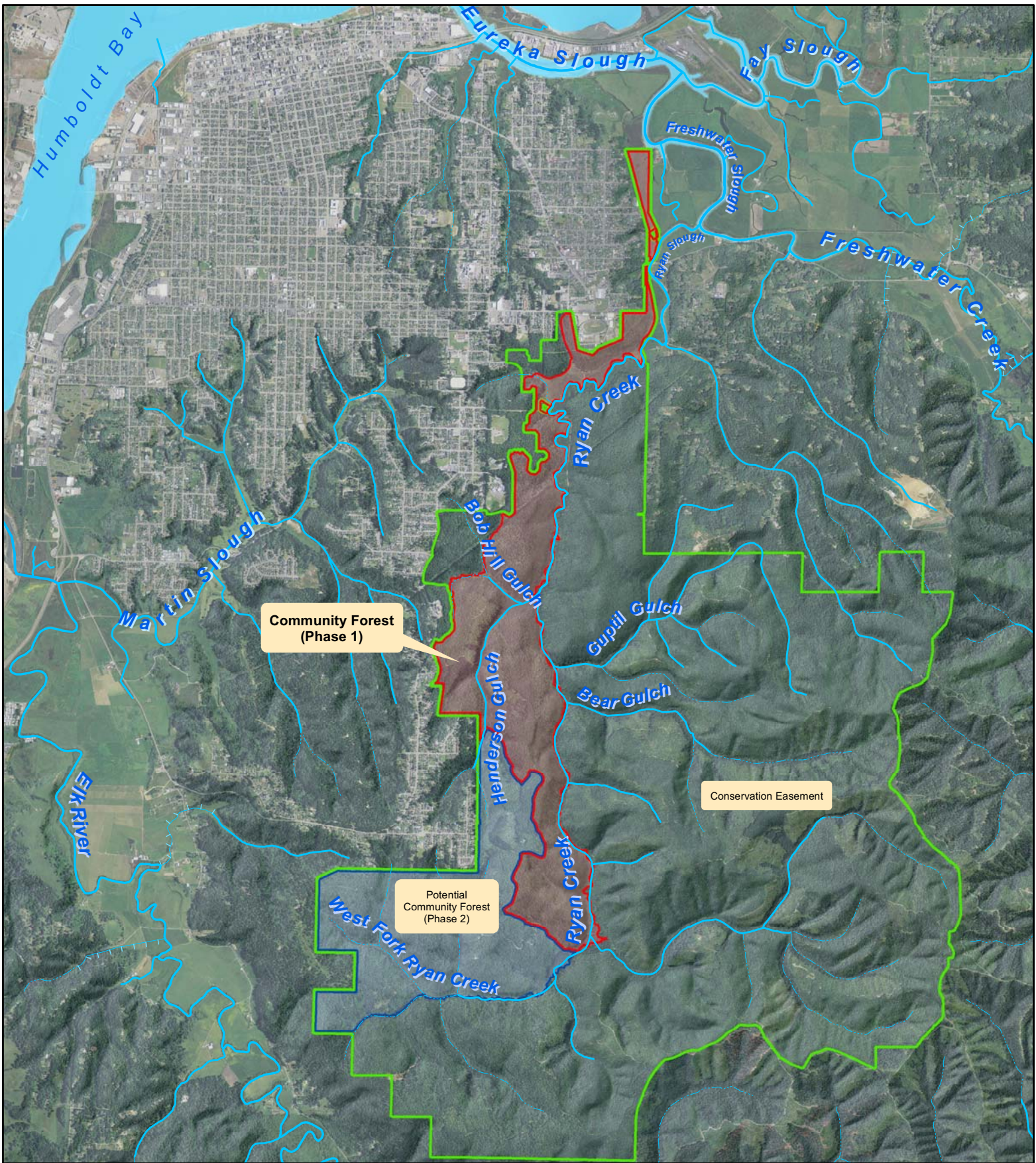


1:144,000

Regional Map

### Legend

- Proposed Community Forest (Phase 1)
- Potential Community Forest Additions (Phase 2)
- Conservation Easement (Green Diamond Retains Ownership)
- McKay Tract



# Proposed McKay Tract Community Forest

## Legend

- Proposed Community Forest (Phase 1)
- Potential Community Forest Additions (Phase 2)
- Conservation Easement (Green Diamond Retains Ownership)
- McKay Tract



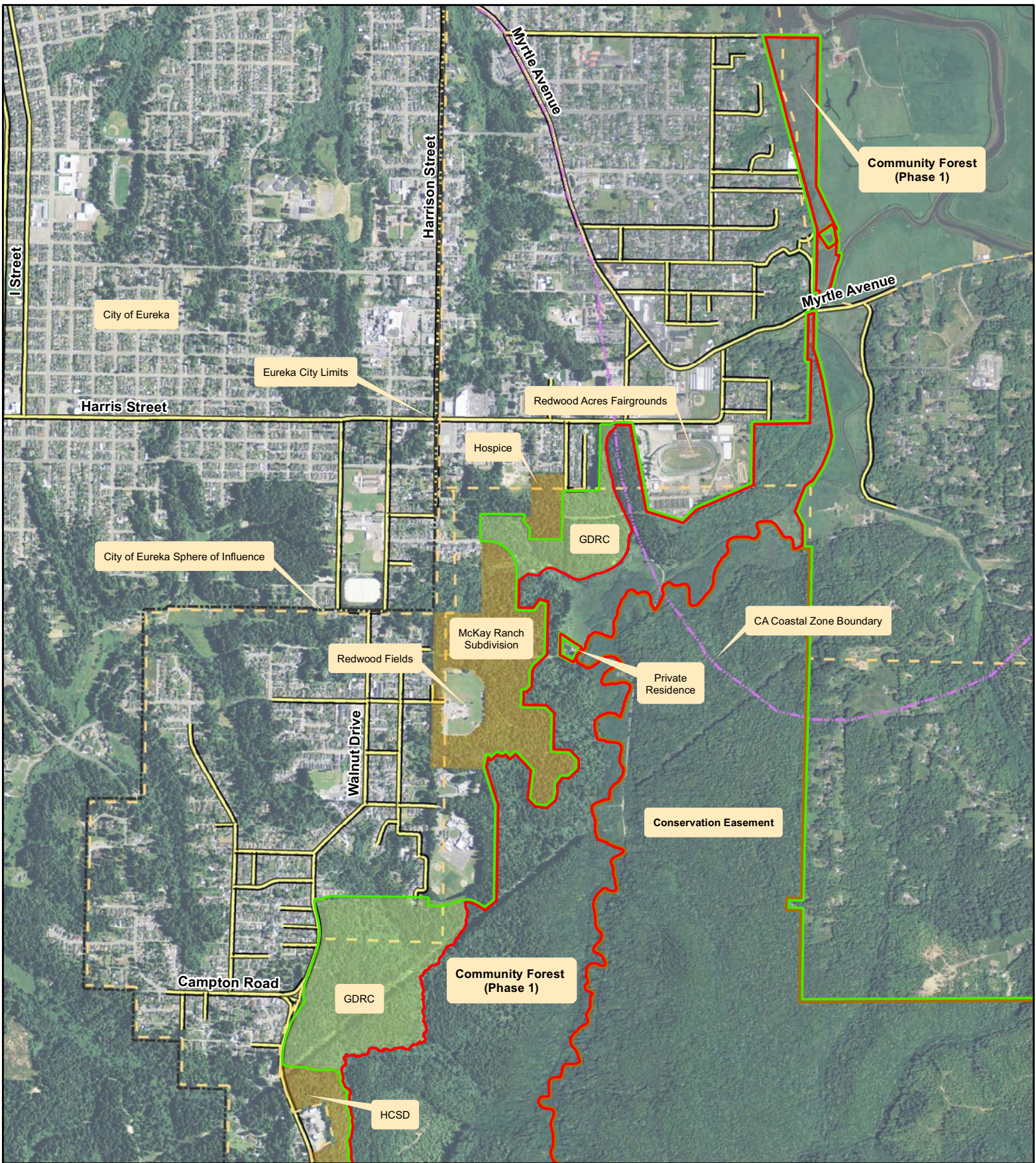
0 0.5 1 Miles

1:50,000

## Watershed Map

Imagery: NAIP 2012

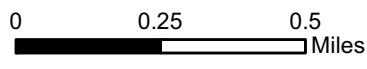
Prepared: April 3, 2014



# Proposed McKay Tract Community Forest

## Legend

- Proposed Community Forest (Phase 1)
- McKay Tract
- Eureka City Limits
- City of Eureka Sphere of Influence
- Green Diamond Retains Ownership

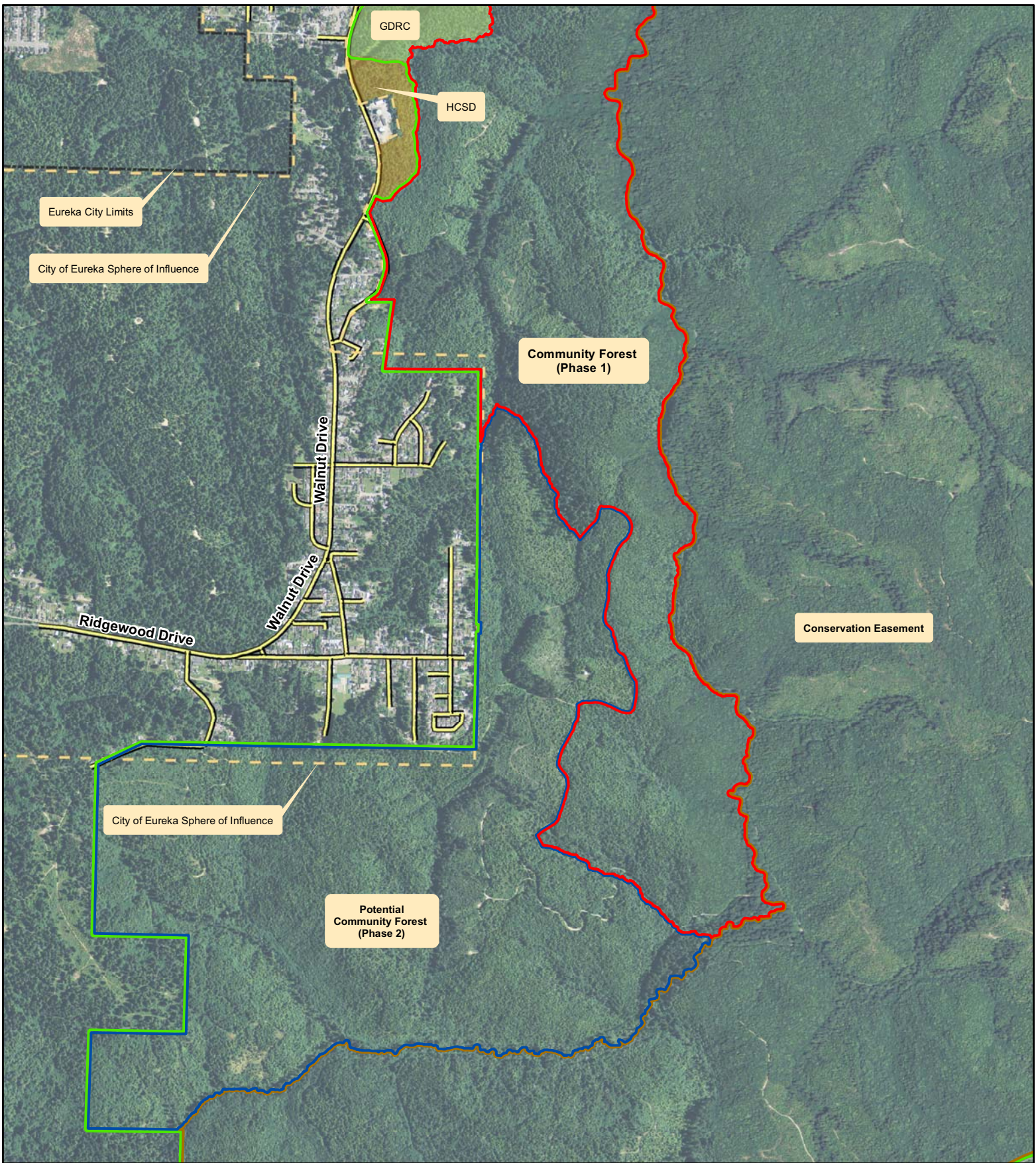


1:21,000

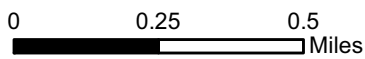
Imagery: NAIP 2012

Prepared: April 3, 2014

Aerial Imagery - North



# Proposed McKay Tract Community Forest



1:21,000

## Legend

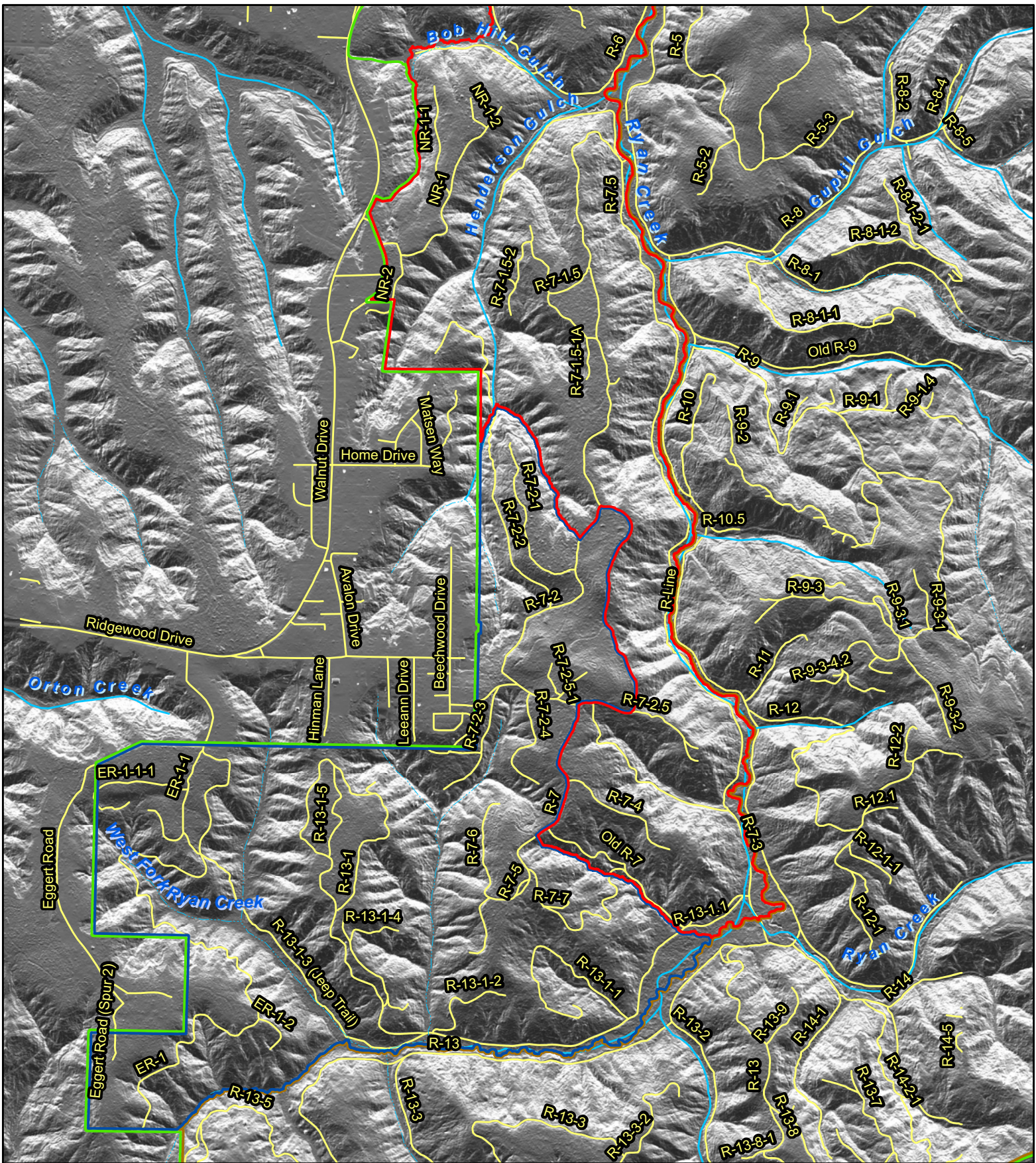
- ▭ Proposed Community Forest (Phase 1)
- ▭ Potential Community Forest Additions (Phase 2)
- ▭ McKay Tract
- Eureka City Limits
- City of Eureka Sphere of Influence
- Green Diamond Retains Ownership

Imagery: NAIP 2012

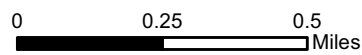
Prepared: April 3, 2014

Aerial Imagery - South





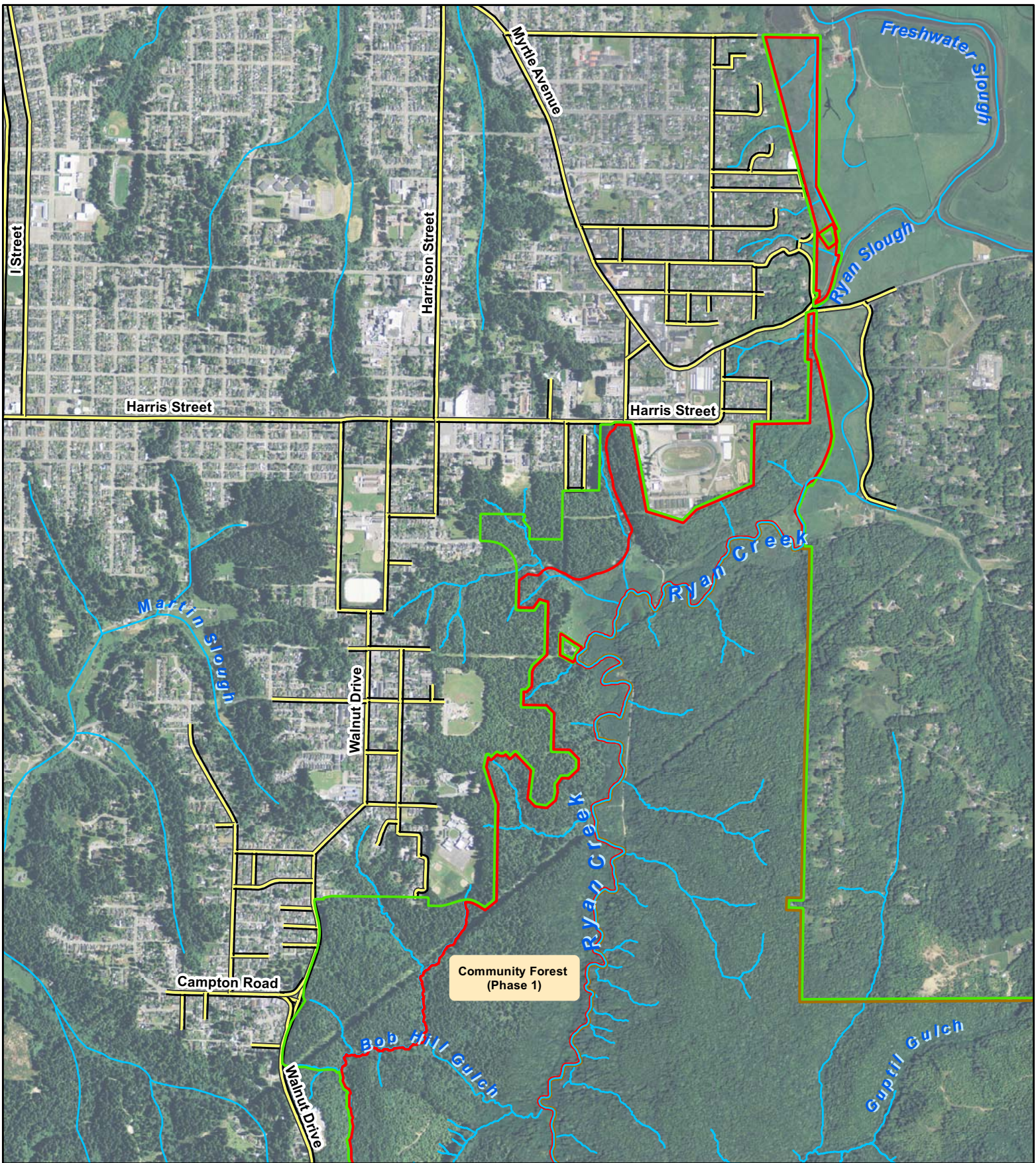
# Proposed McKay Tract Community Forest



1:21,000

## Legend

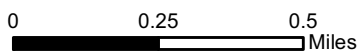
- ▭ Proposed Community Forest (Phase 1)
- ▭ Potential Community Forest Additions (Phase 2)
- ▭ McKay Tract
- ▭ Waterways
- ▭ Public and Private Roads (conditions of logging roads vary)



# Proposed McKay Tract Community Forest

## Legend

- Proposed Community Forest (Phase 1)
- McKay Tract
- Waterways

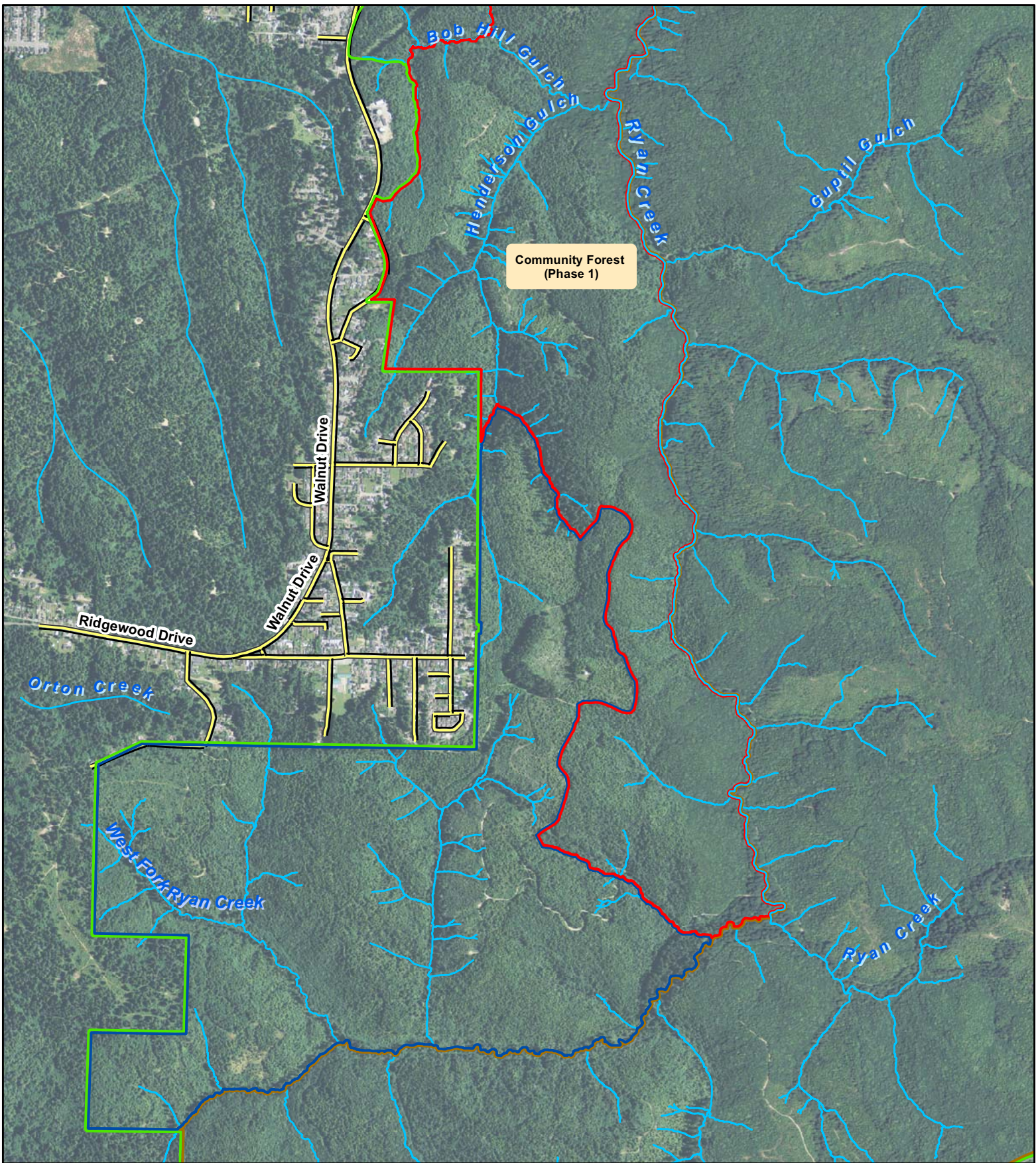


1:21,000

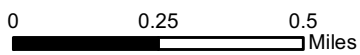
Imagery: NAIP 2012

Prepared: April 3, 2014

**Waterways - North**



# Proposed McKay Tract Community Forest



1:21,000

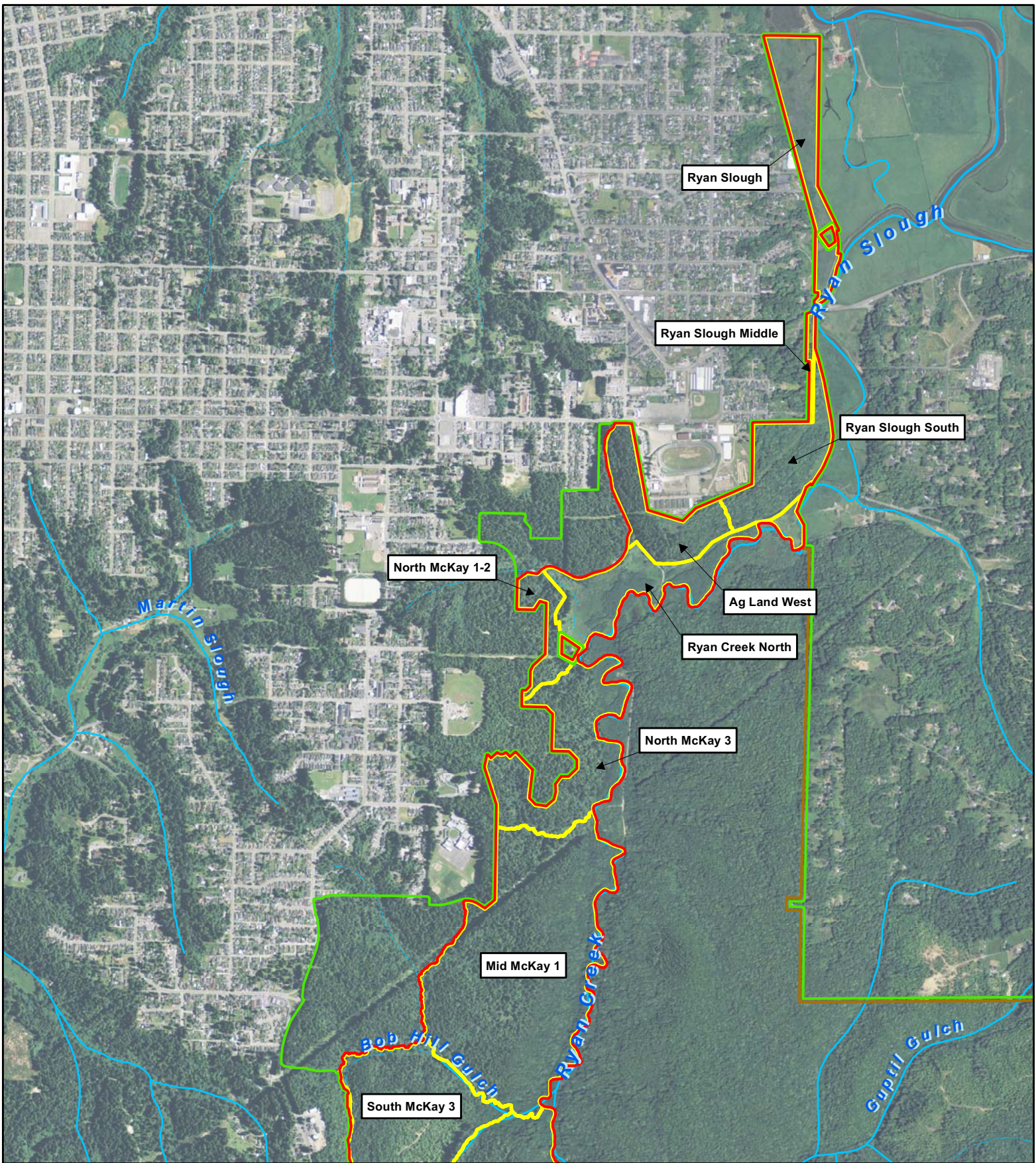
## Legend

- █ Proposed Community Forest (Phase 1)
- █ Potential Community Forest Additions (Phase 2)
- █ McKay Tract
- █ Waterways

Imagery: NAIP 2012

Prepared: April 3, 2014

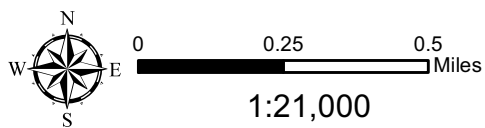
**Waterways - South**



# Proposed McKay Tract Community Forest

## Legend

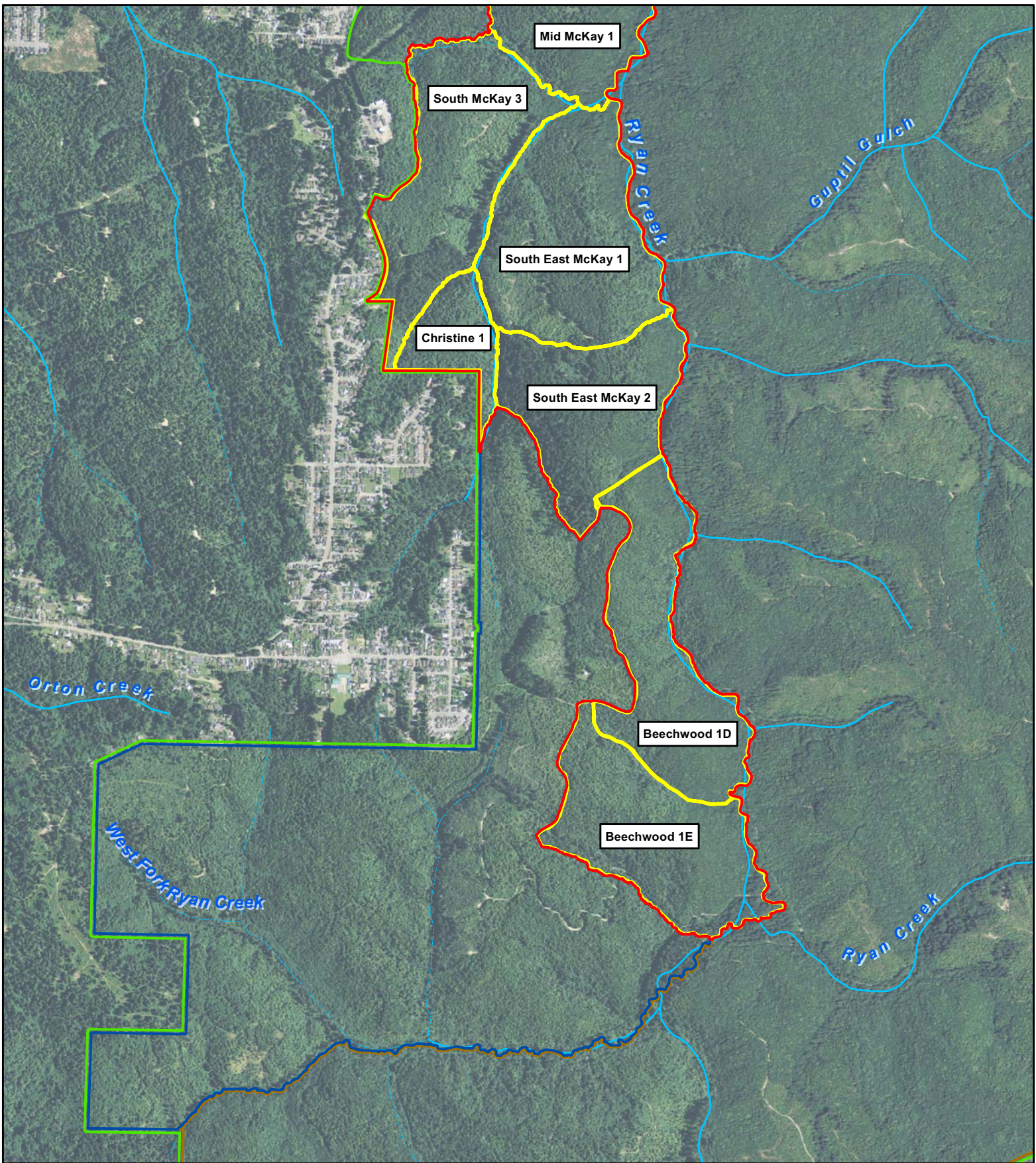
- Proposed Community Forest (Phase 1)
- McKay Tract
- Operating Units



Imagery: NAIP 2012

Prepared: April 3, 2014

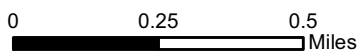
**Timber Operating Units - North**



# Proposed McKay Tract Community Forest

## Legend

- ▭ Proposed Community Forest (Phase 1)
- ▭ Potential Community Forest Additions (Phase 2)
- ▭ McKay Tract
- ▭ Operating Units

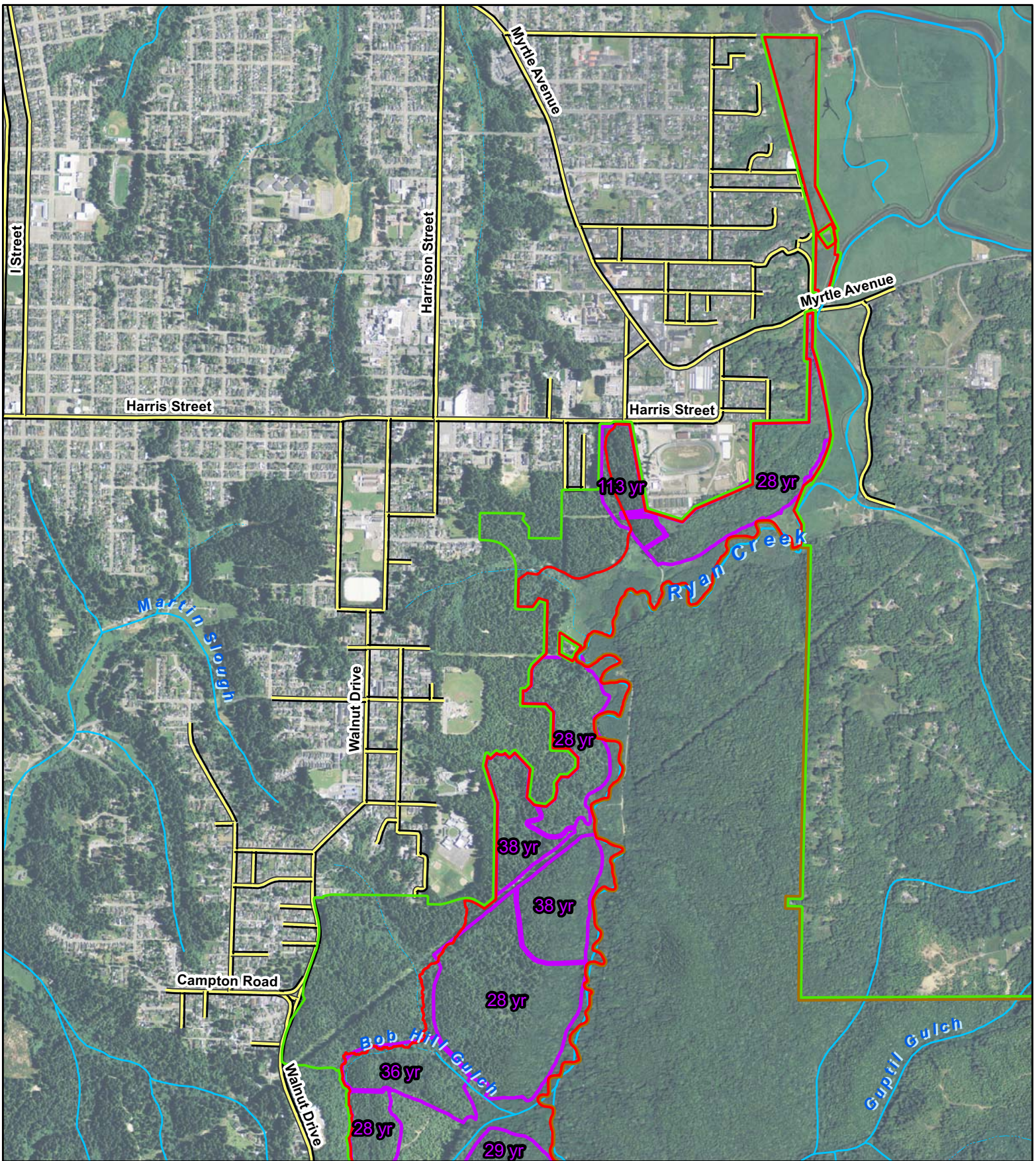


1:21,000

Imagery: NAIP 2012

Prepared: April 3, 2014

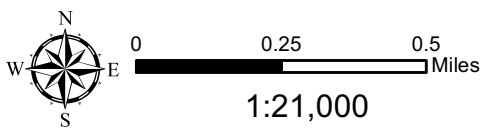
**Timber Operating Units - South**



# Proposed McKay Tract Community Forest

## Legend

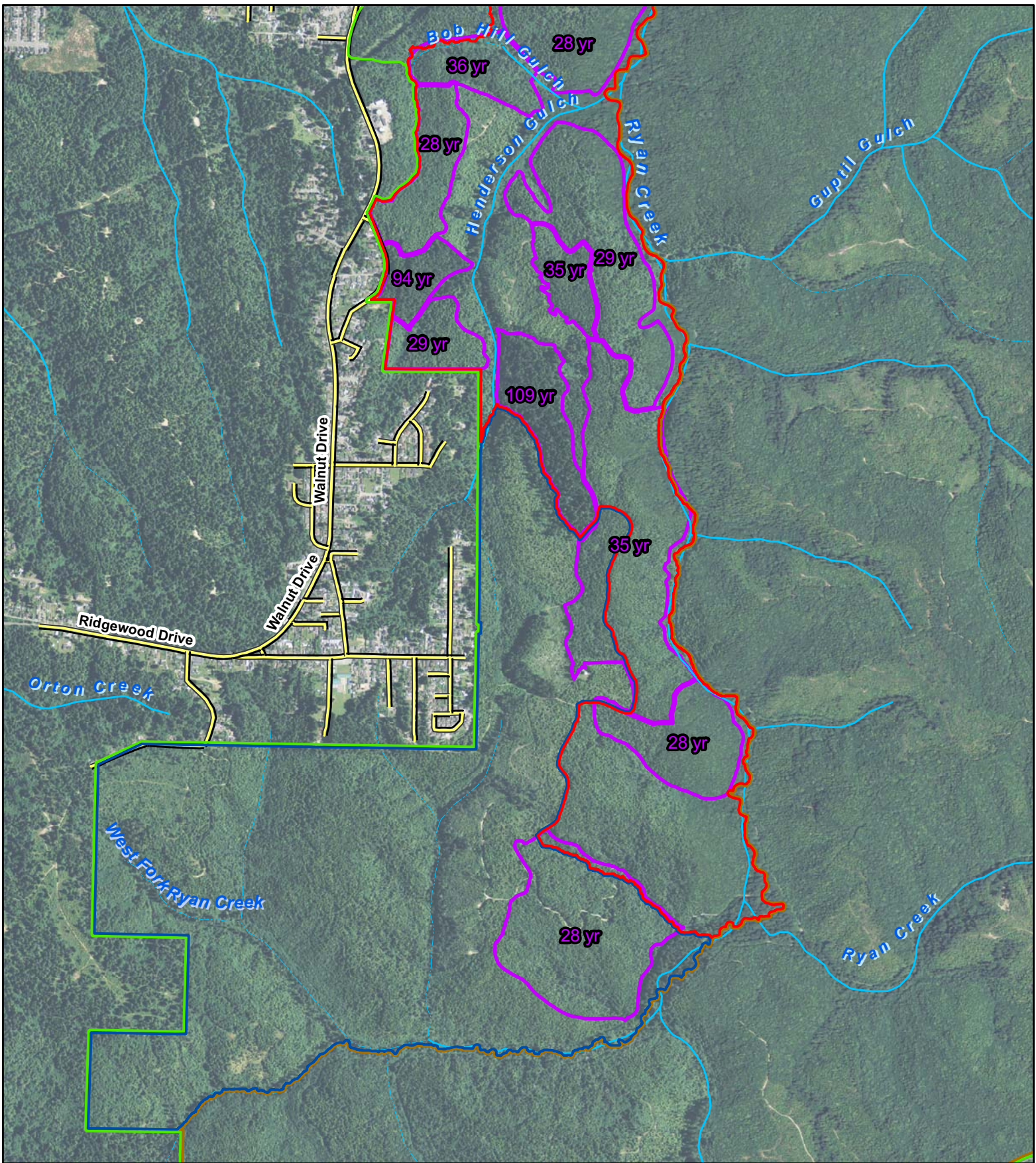
- Proposed Community Forest (Phase 1)
- Stand Age (Ages for Stands <25 years old not shown)



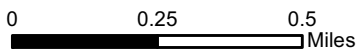
Imagery: NAIP 2012

Prepared: April 3, 2014

**Timber Stand Ages - North**



# Proposed McKay Tract Community Forest



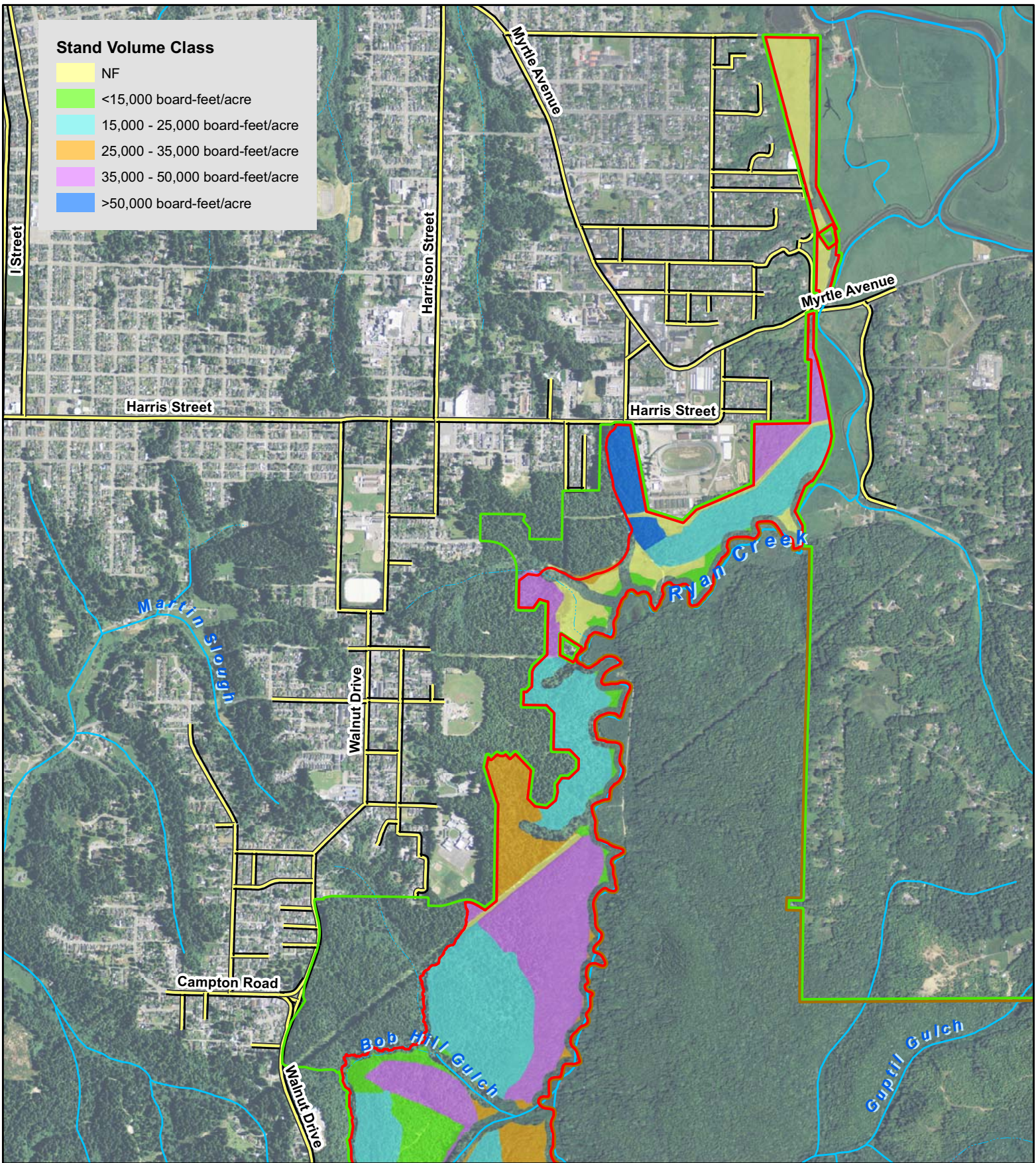
1:21,000

## Legend

Proposed Community Forest (Phase 1)

Potential Community Forest Additions (Phase 2)

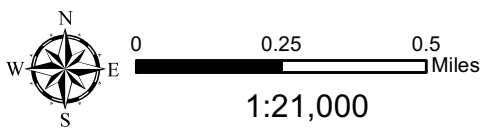
Stand Age (Ages for Stands <25 years old not shown)



## Proposed McKay Tract Community Forest

### Legend

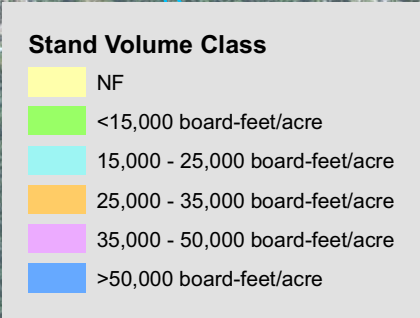
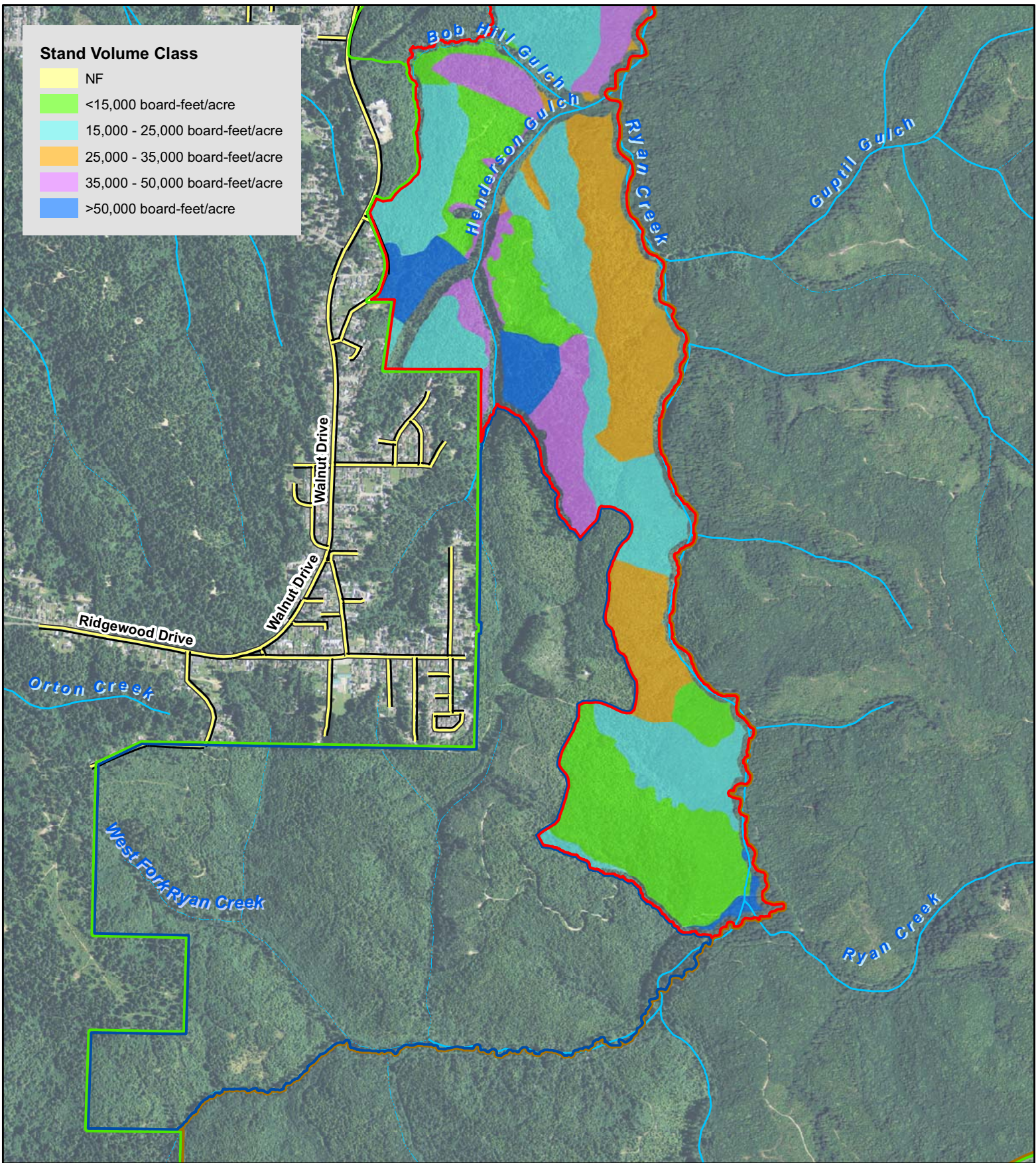
- Proposed Community Forest (Phase 1)
- McKay Tract





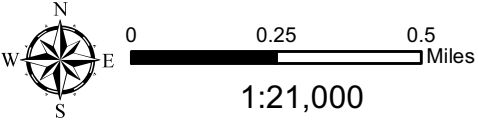



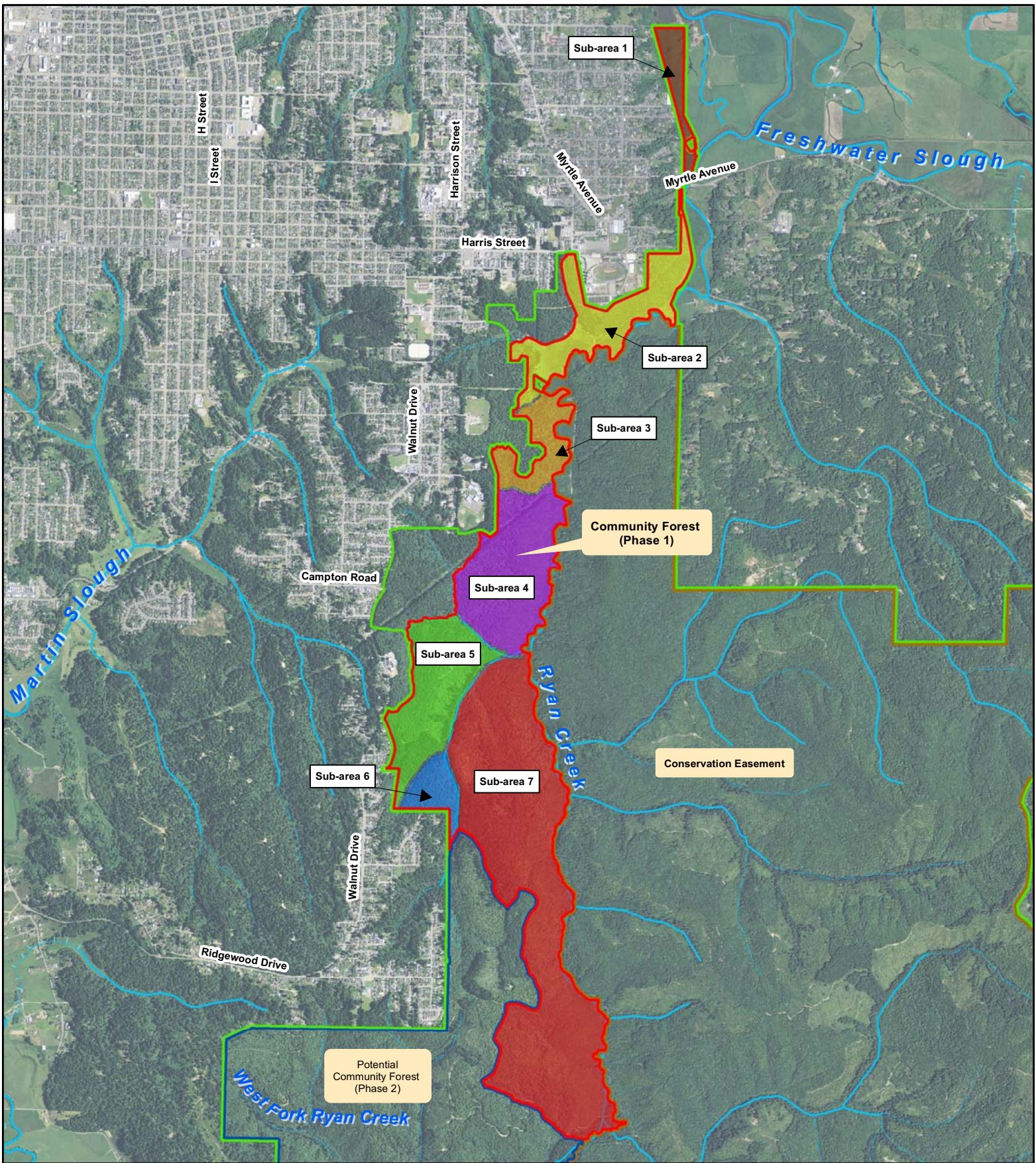
Imagery: NAIP 2012

Prepared: April 3, 2014

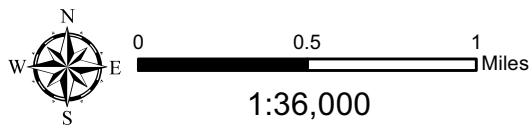
**Timber Stand Volume - North**



<h2>Proposed McKay Tract Community Forest</h2>		<b>Legend</b>	
		 Proposed Community Forest (Phase 1)	 Potential Community Forest Additions (Phase 2)
 <p>0 0.25 0.5 Miles 1:21,000</p>		 McKay Tract	
Imagery: NAIP 2012	Prepared: April 3, 2014	<b>Timber Stand Volume - South</b>	



# Proposed McKay Tract Community Forest



## Legend

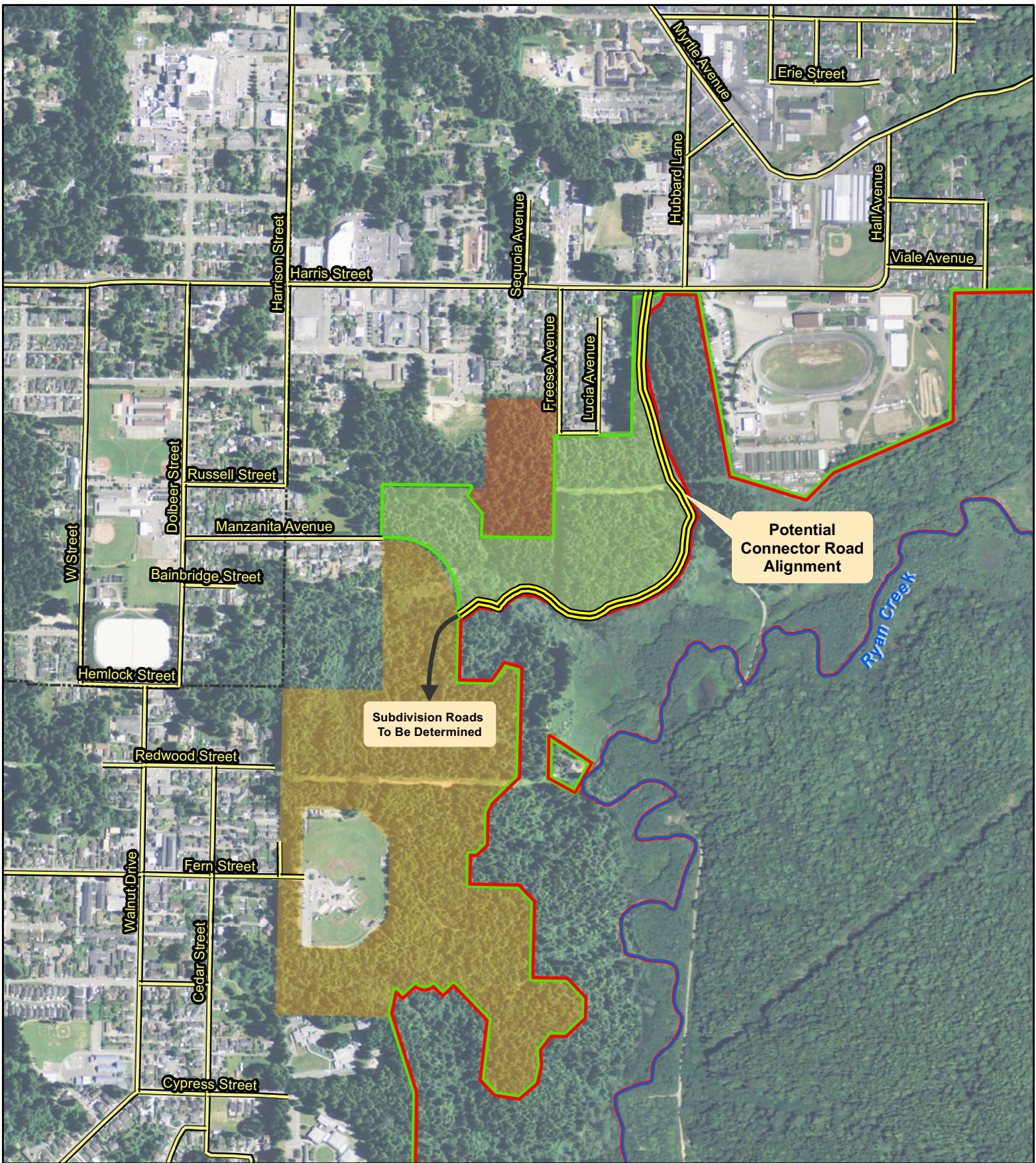
- Proposed Community Forest (Phase 1)
- Potential Community Forest Additions (Phase 2)
- McKay Tract
- Waterways

Note: Sub-areas based on access/connectivity

Imagery: NAIP 2012

Prepared: April 3, 2014

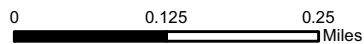
**Geographic Sub-areas**



# Proposed McKay Tract Community Forest

## Legend

- Proposed Community Forest (Phase 1)
- Hospice of Humboldt
- Green Diamond Retains Ownership
- McKay Ranch Subdivision
- Eureka City Limits

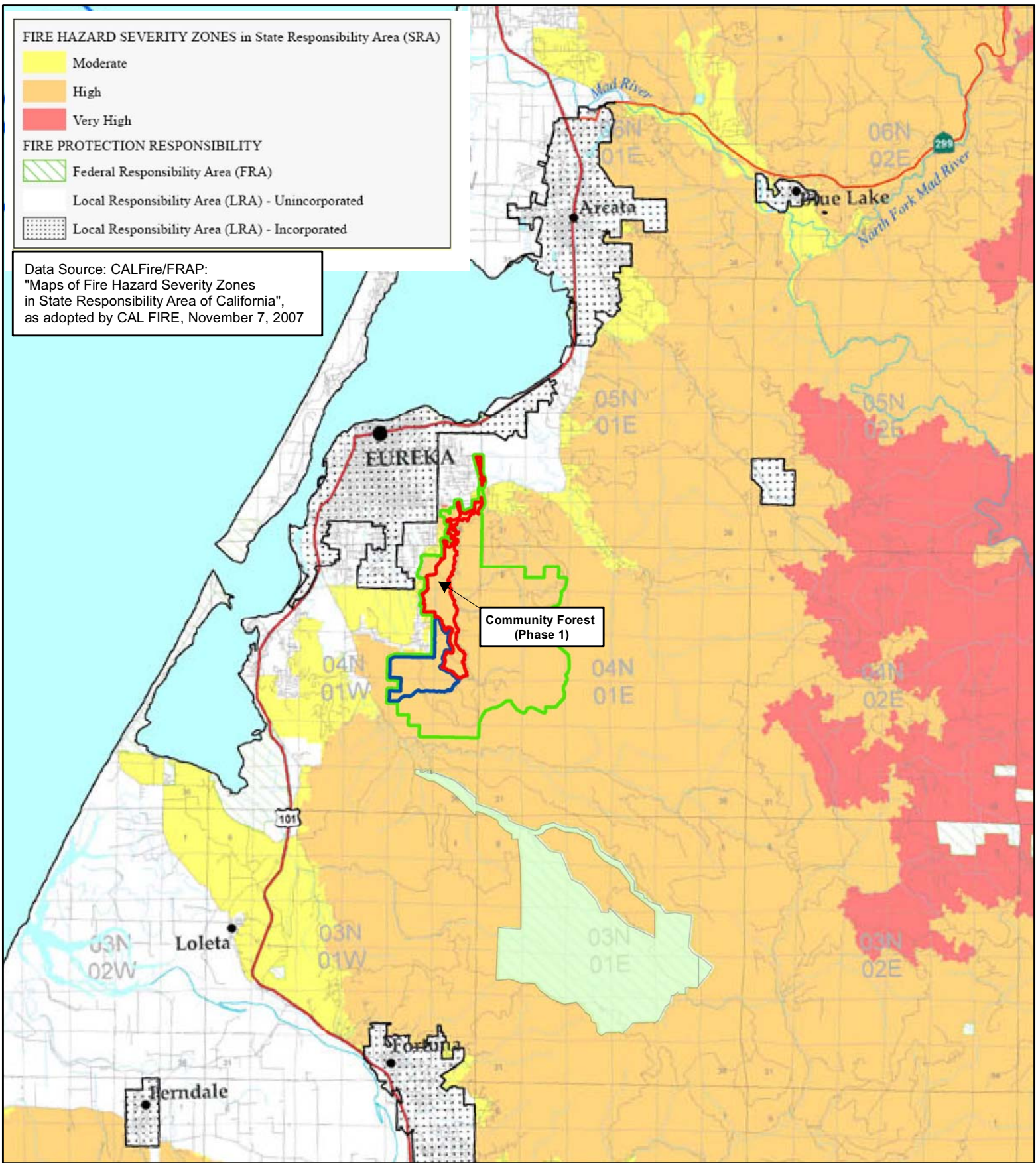


1:10,000

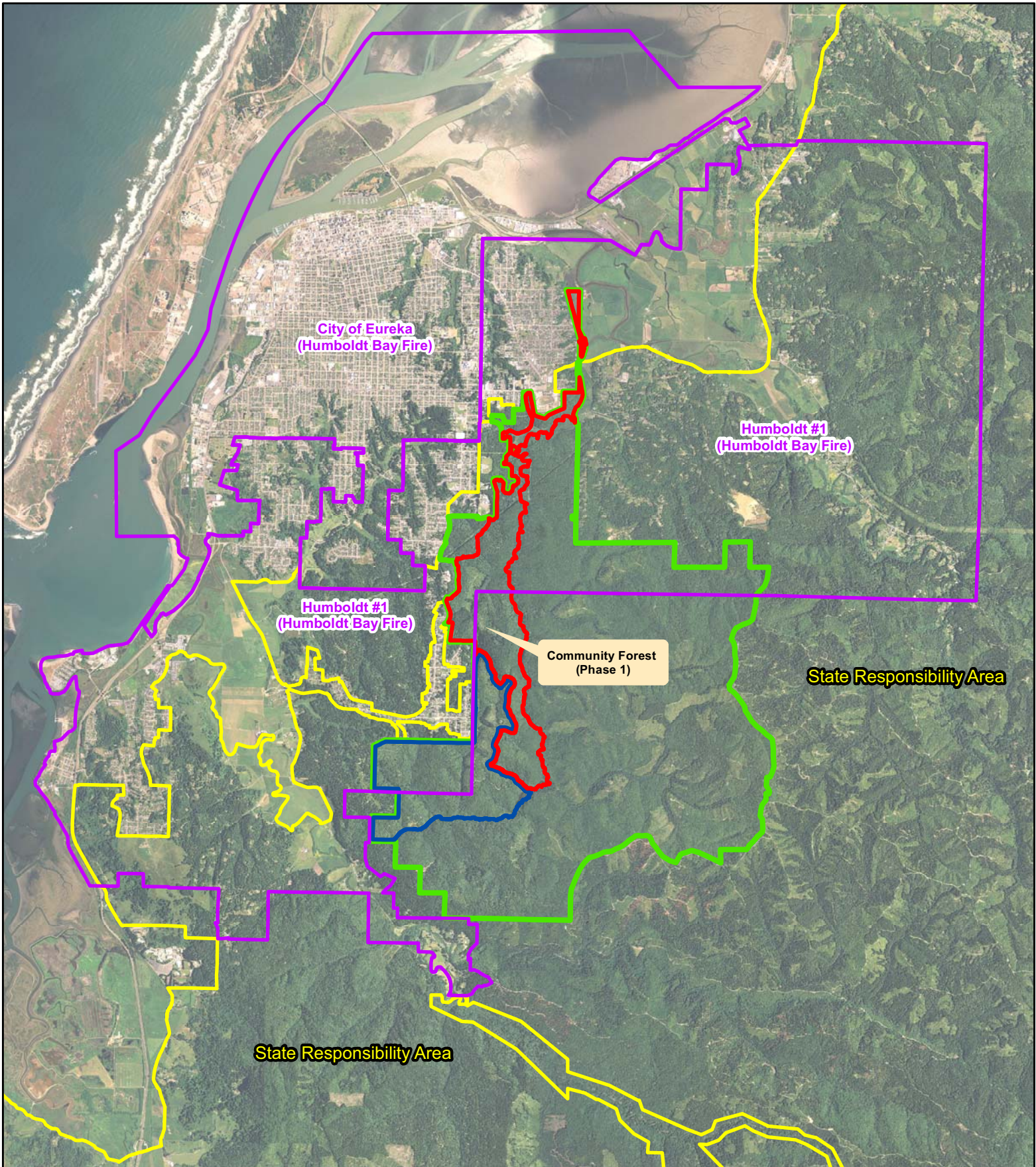
## Potential Connector Road Alignment (Walnut Drive to Harris Street)

Imagery: NAIP 2012

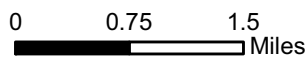
Prepared: April 3, 2014



<p><b>Proposed McKay Tract Community Forest</b></p>		<p><b>Legend</b></p> <ul style="list-style-type: none"> <li>Proposed Community Forest (Phase 1)</li> <li>Potential Community Forest Additions (Phase 2)</li> <li>McKay Tract</li> </ul>	
			<p>1:180,000</p>
<p>Imagery: CALFire/FRAP FHSZ Map</p>		<p>Prepared: April 3, 2014</p>	
<p><b>Fire Hazard Severity Zones</b></p>			



# Proposed McKay Tract Community Forest



1:80,000

## Legend

- ▭ Proposed Community Forest (Phase 1)
- ▭ Potential Community Forest Additions (Phase 2)
- ▭ McKay Tract
- ▭ Local Fire District
- ▭ State Responsibility Area (SRA)

Imagery: NAIP 2012

Prepared: April 3, 2014

**SRA/ Fire District Boundaries**