

Humboldt County

Vegetation



SEBASTO COUNTY

Map Legend

Wildlife Habitat Relationship (WHR) Type

- DOUGLAS FIR
- MONTANE HARDWOOD*
- REDWOOD
- ANNUAL GRASS
- AGRICULTURE-CROPS
- WHITE FIR
- COASTAL OAK WOODLAND
- BARREN
- CHAMPAEAL*
- Klamath MIXED CONIFER
- URBAN
- COASTAL SCRUB
- WATER
- SALINE EMERGENT WETLAND
- RED FIR
- FRESHWATER EMERGENT WETLAND
- WET MEADOW
- OTHER*

City Boundary

- City Boundary

Highways and Major Roads

- HWY 101
- State HWY
- HWY or Secondary Road
- Local Road or Street

Hydrography

- Major River or Stream
- Continuous Perennial
- Continuous Intermittent
- Subsurface

* Other WHR types are eligible when the cover is greater than 10% in a given WHR type and adjacent to a stream.

* Other WHR types are eligible when the cover is greater than 10% in a given WHR type and adjacent to a stream.

WHR Type	Total Acres
DOUGLAS FIR	102,452
MONTANE HARDWOOD	408,201
REDWOOD	208,201
ANNUAL GRASS	208,201
AGRICULTURE-CROPS	208,201
WHITE FIR	208,201
COASTAL OAK WOODLAND	208,201
BARREN	208,201
CHAMPAEAL	208,201
Klamath MIXED CONIFER	208,201
URBAN	208,201
COASTAL SCRUB	208,201
WATER	208,201
SALINE EMERGENT WETLAND	208,201
RED FIR	208,201
FRESHWATER EMERGENT WETLAND	208,201
WET MEADOW	208,201
OTHER	208,201

Vegetation data is based on CDF GIS layer of vegetation (CALVEG and WHR) for counties from January 1992 to 2002. Data was downloaded from the California Department of Forestry and Fire Protection's Fire and Resource Assessment Program (FRAP) website. The amount and extent of California forests and rangelands, and their conditions and identifies alternative management and policy guidelines.

Vegetation data is derived from aerial photography to assess current conditions, monitoring changes over time, and determining management options. Vegetation data is derived from LANDSAT TM imagery. Each pixel is assigned a Wildlife Habitat Relationship (WHR) and CALVEG codes, crown cover data, tree size data, and other attributes. Project period: 1991 - 1998.

Life Form Classification Rules

- Conifer - greater than 10% cover as the dominant type
- Mix - conifer greater than 10% cover and hardwood greater than 10%
- Hardwood - greater than 10% hardwood cover as the dominant type
- Shrub - greater than 10% cover as the dominant type
- Grass - greater than 10% cover as the dominant type
- Barren - less than 10% cover of any vegetation
- Agriculture
- Urban
- Water

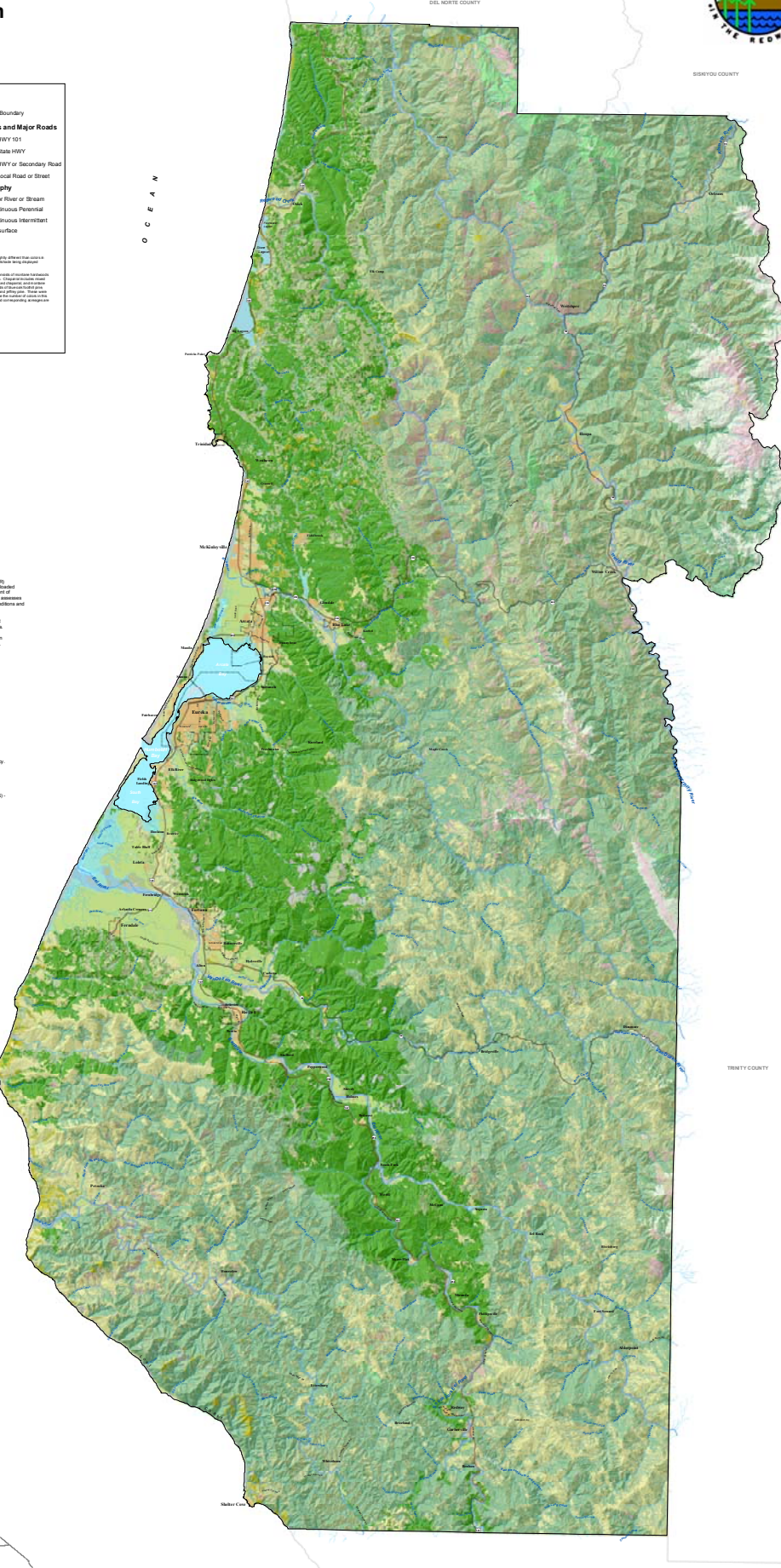
Vegetation types, specific areas of coverage, and statistics do not necessarily reflect current conditions.

Topography shading is based on 10 meter Digital Elevation Model (DEM). This map is intended for display purposes and should not be used for precise measurement or navigation. Data has not been completely checked for accuracy.

ARC/INFO 5.2 Map File: H:\humb\c:\agrinfo\map.mxd
 HP Design Jet 6300 Plot File: H:\humb\c:\agrinfo\humbcounty.mxd
 Map compiled by Humboldt County Community Development Services (HCCDS) - Advance Planning Division, February 2002.

Scale: 1:125,000

North Arrow



RF 1:125,000