

FINAL PROGRAM ENVIRONMENTAL IMPACT REPORT
ON
GRAVEL REMOVAL FROM THE LOWER EEL RIVER
JULY 1992

INTRODUCTION

This document is a Program Environmental Impact Report (EIR) which will cover 13 gravel extraction and related processing operations that are located close to one another in the lower part of the Eel River watershed. This type of document is described in detail in Section 15168 of the guidelines for implementation of the California Environmental Quality Act of 1970. The planning department believes this type of document will provide a good overview of the cumulative effects of the removal of gravel from the lower part of the Eel River watershed.

Another benefit of a Program EIR is to provide a basis for an Initial Study for determining whether other gravel removal projects in this area would have significant effects. It may also be incorporated by reference into future environmental documents prepared on specific gravel removal projects within the same area so that document can deal with regional influences, secondary effects, and cumulative impacts.

PROJECT LOCATION

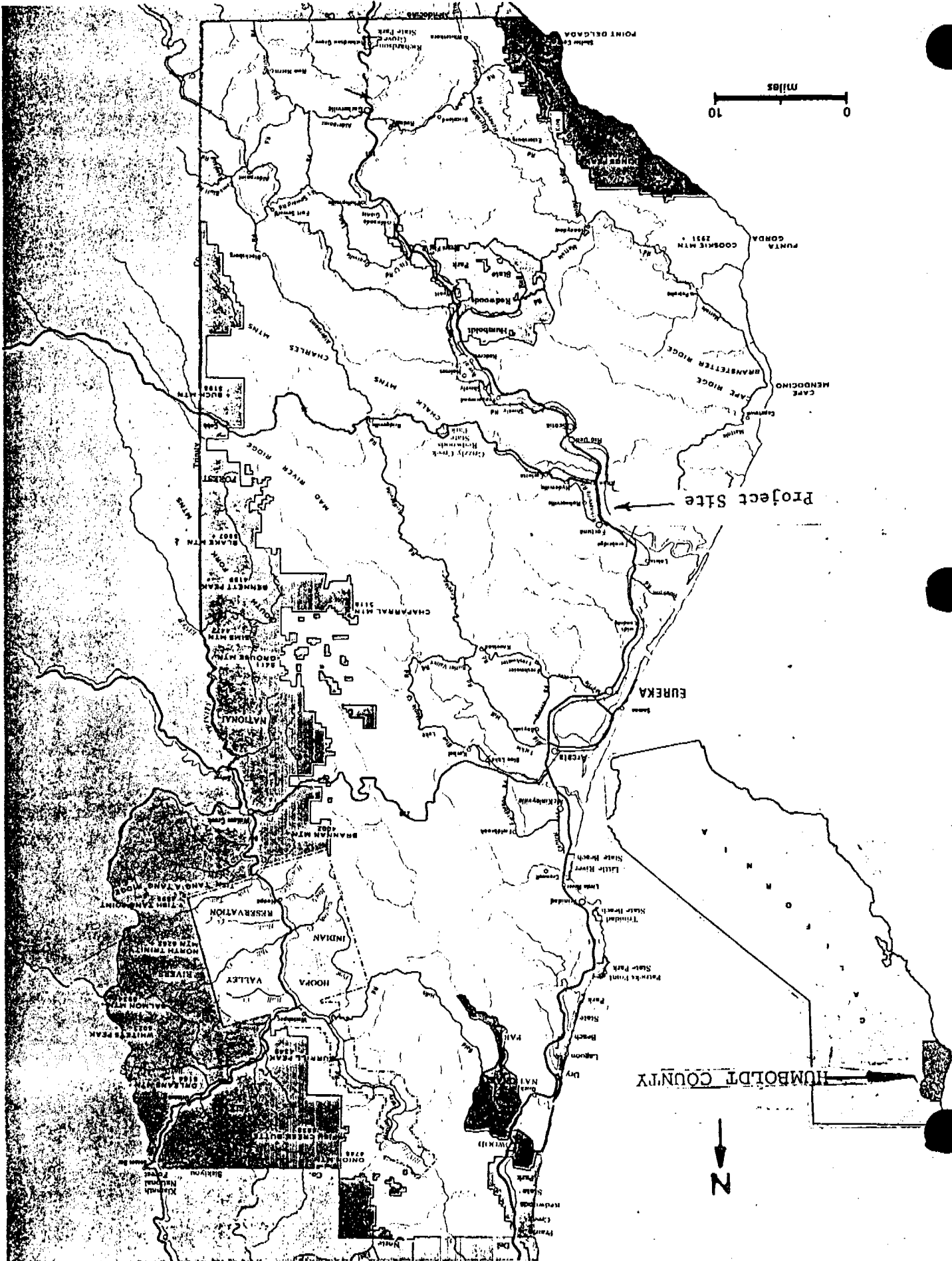
The area from which gravel is to be removed is located on the Lower Eel River and Lower Van Duzen River. On the Eel River 11 gravel operations are located along eight miles of the river between a mile below Fernbridge to the mouth of the Van Duzen River. Two operations on the lower Van Duzen River are located at river mile 5.0 and 6.0. River mile 5.0 is located near the mouth of Yager Creek. River mile 6.0 is near the end of Odd Fellows Park Road near the community of Carlotta. Maps 1 and 2 show these locations.

INDIVIDUAL PROJECT SITE DETAILS

A brief description of each project site follows. Some have existed for many years while a few new ones have been proposed. The gravel projects are presented geographically, in order by location, beginning at the downstream end. The individual gravel projects are numbered. The numerical order does not coincide with the geographic order.

Site No. 12 - Arcata Readimix

1. Location. The bar from which gravel will be removed extends approximately two miles downstream of Fernbridge as shown on Map No. 3 and Photograph No. 1. The initial extraction area is approximately one mile in length by a few hundred feet in width.

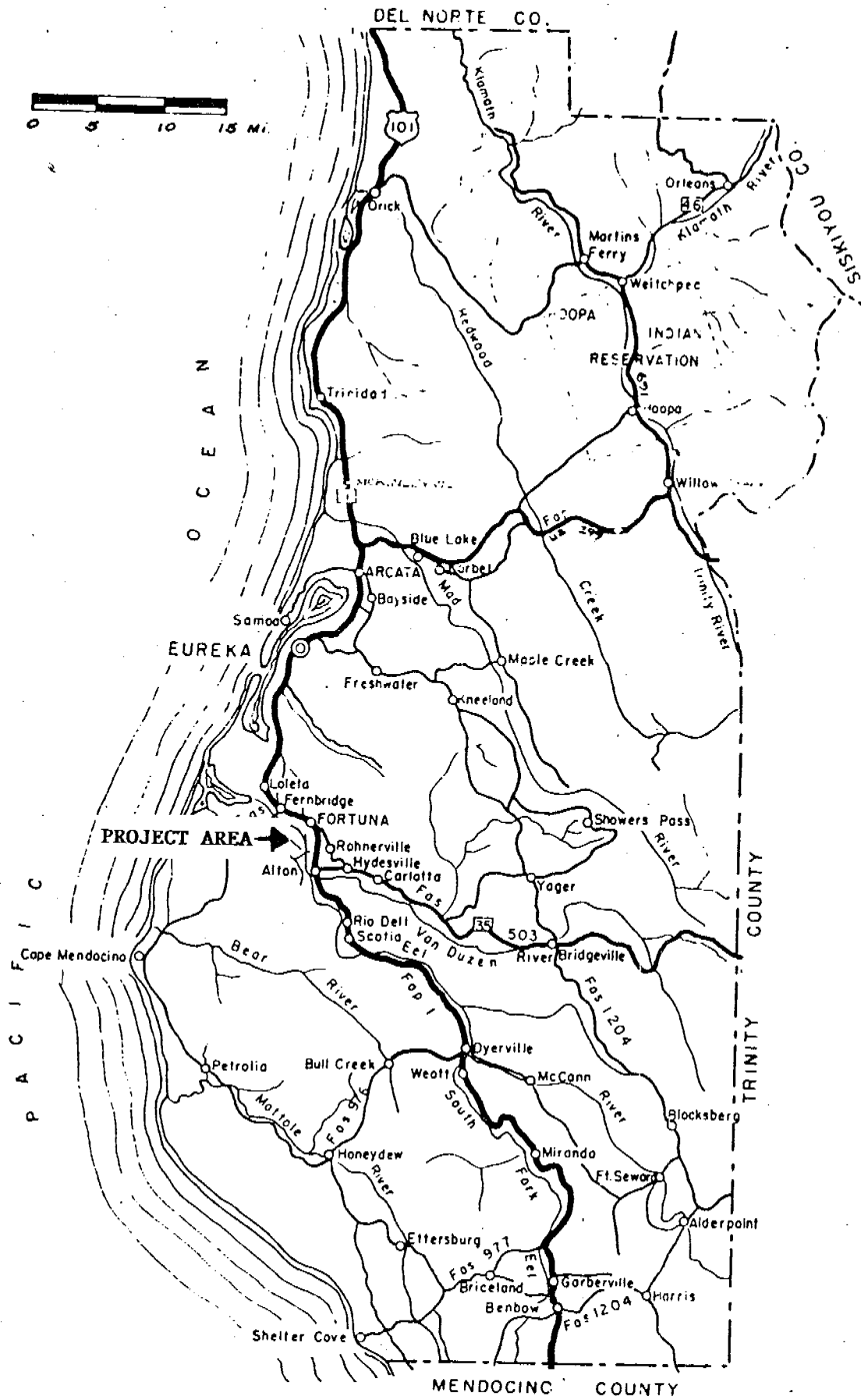


10 miles

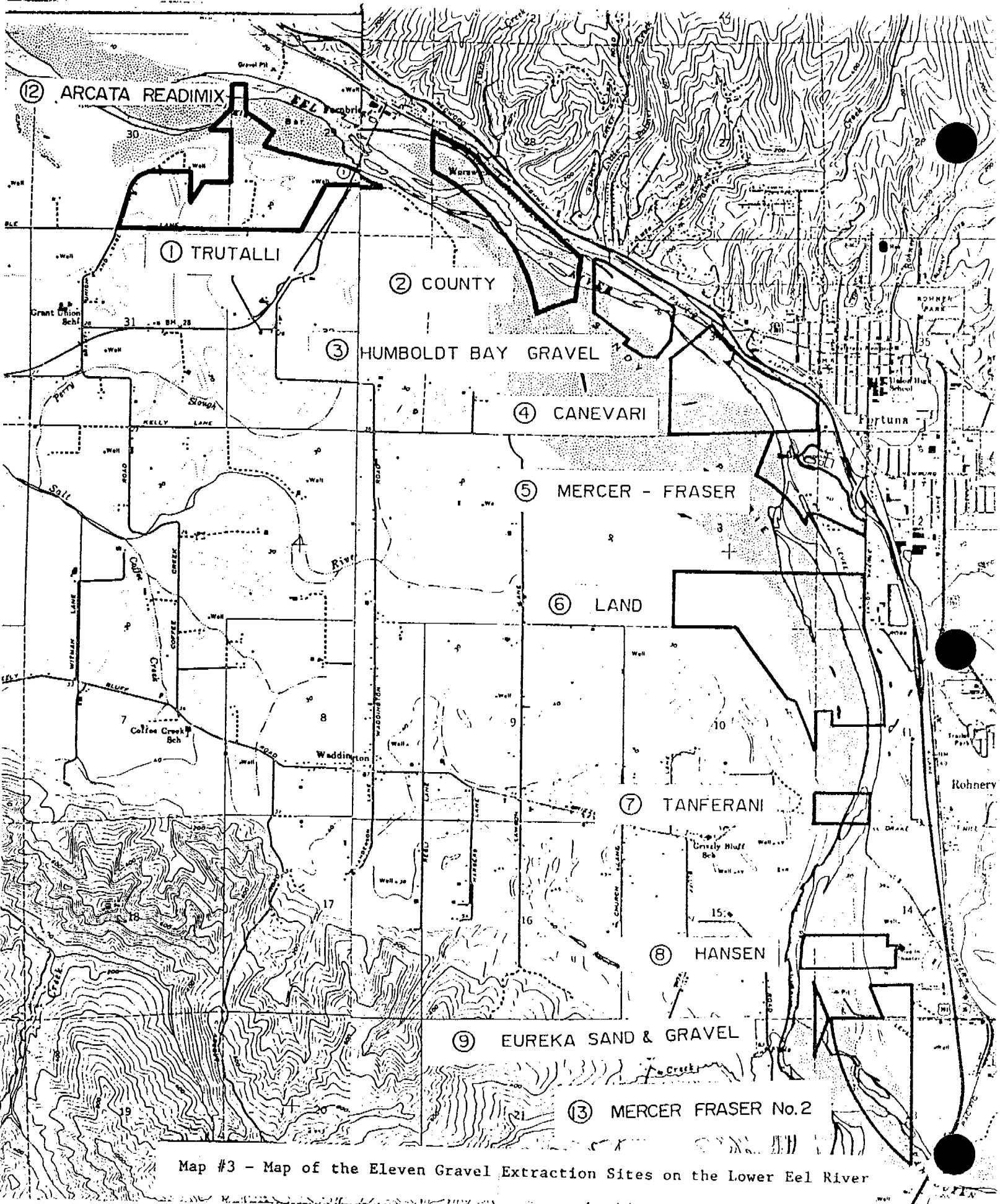
Project Site

HUMBOLDT COUNTY

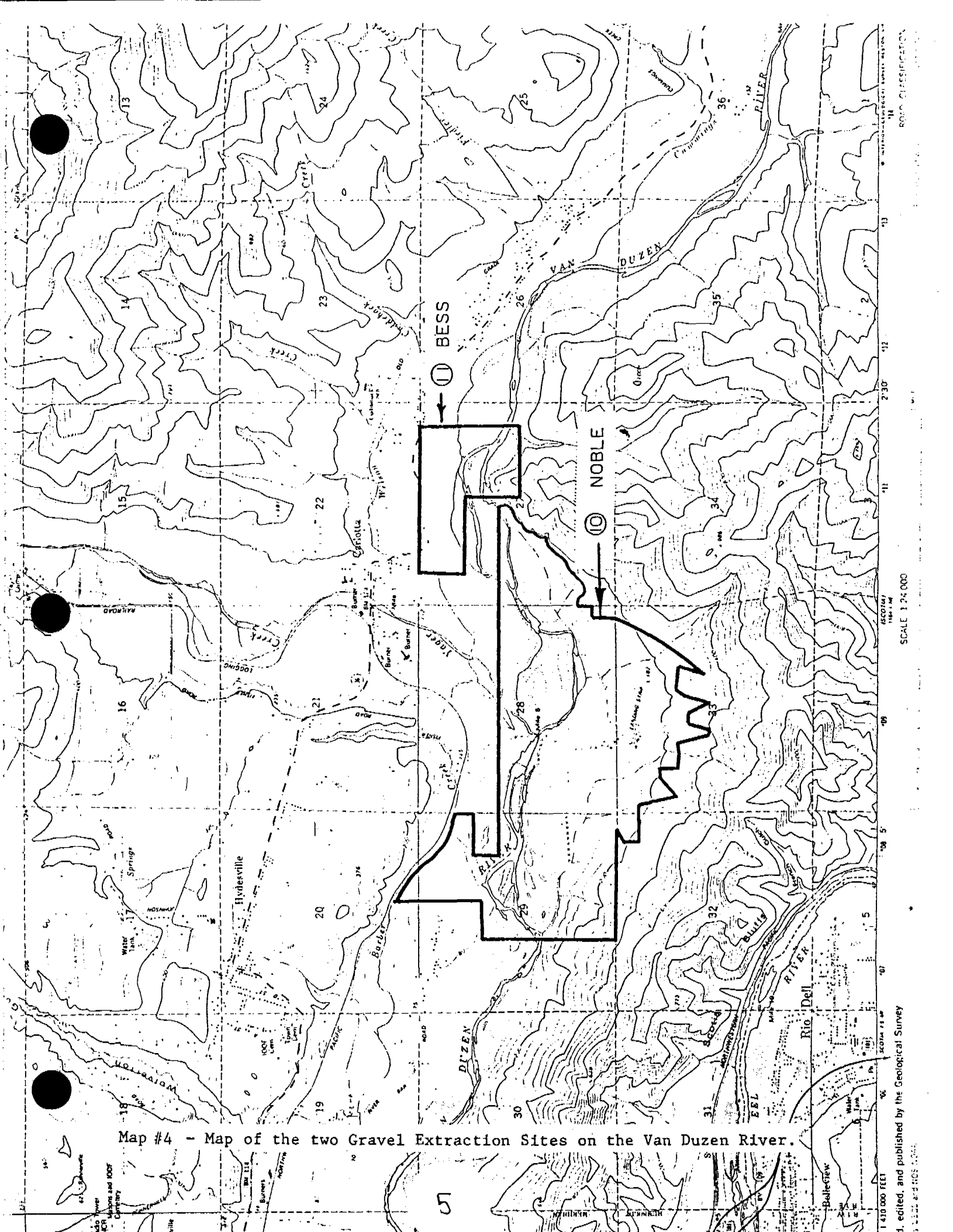
2



Map #2 - Map of Humboldt County



Map #3 - Map of the Eleven Gravel Extraction Sites on the Lower Eel River



Map #4 - Map of the two Gravel Extraction Sites on the Van Duzen River.