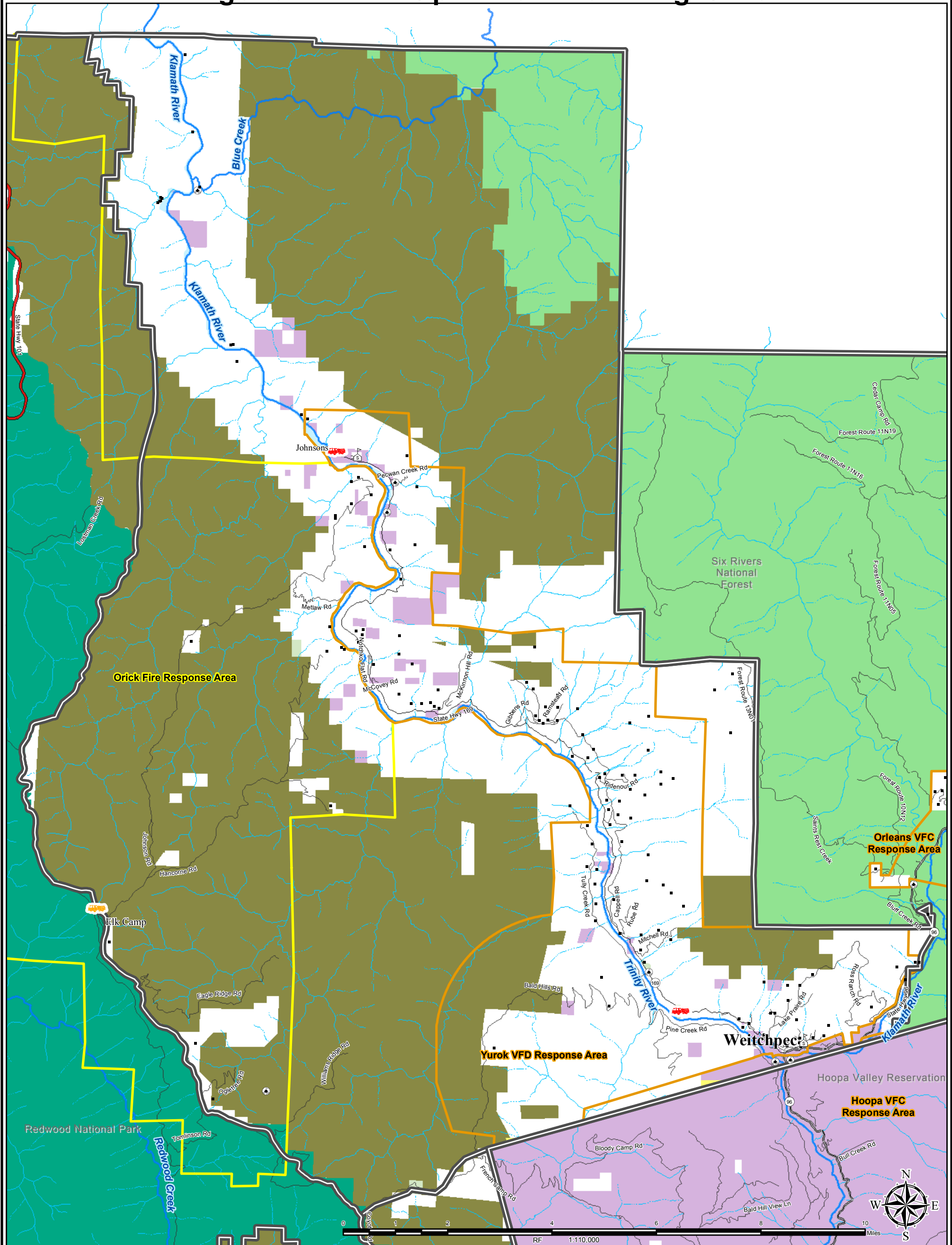
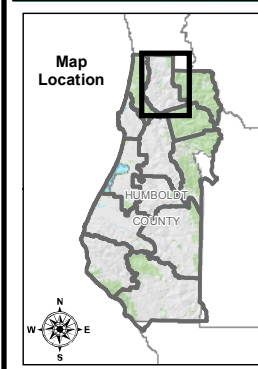


# Figure IV.2-1 Up River Planning Unit



## CWPP Unit Map



### Legend

- CWPP Planning Unit Boundary
- Emergency Response**
- Local Fire Station
- CAL Fire Station
- Six Rivers Fire Station
- Hospitals and Clinics**
- Hospital/Medical Center
- Red Cross
- Lookout, Lights, Radio**
- Lighthouse
- School

- Local Fire Organization Response Area**
- District
- Out of District
- Non-Tax (Volunteer Fire Company (VFC))
- Proposed District Annexation Area (PDAA)
- Improved Parcels**
- Improved Parcel (not actual location of improvement)
- Commercial or Industrial Lot (not actual location)
- Airports**
- Landing Strip

- Highways and Roads**
- HWY 101
- State HWY
- HWY or Secondary Road
- Local Road or Street
- Hydrography**
- Major River or Stream
- Infrastructure**
- Gauging Station
- Water Tank or Source
- Historic Locations

- Land Ownership AGENCY**
- Bureau of Land Management
- National Park Service
- State Park or Other State Lands
- Six Rivers National Forest
- U.S. Fish and Wildlife Service
- Tribal Lands
- Private
- Industrial Timber
- Cities

**Humboldt County FireSafe COUNCIL**

Land ownership and infrastructure data has been compiled by The County of Humboldt. Fire planning features identified at community workshops by residents; local, state, and federal fire service personnel; and Humboldt County staff. Other data sources were the 2006 Humboldt County Master Fire Protection Plan.

This map is intended for planning purposes and should not be used for precise measurement or navigation.

Map compiled by County of Humboldt, March 2013.  
 Online maps visit: <http://gis.co.humboldt.ca.us/>  
 Contact: [cimmit@co.humboldt.ca.us](mailto:cimmit@co.humboldt.ca.us) or [jvondohlen@co.humboldt.ca.us](mailto:jvondohlen@co.humboldt.ca.us)