

RCUB
10/14

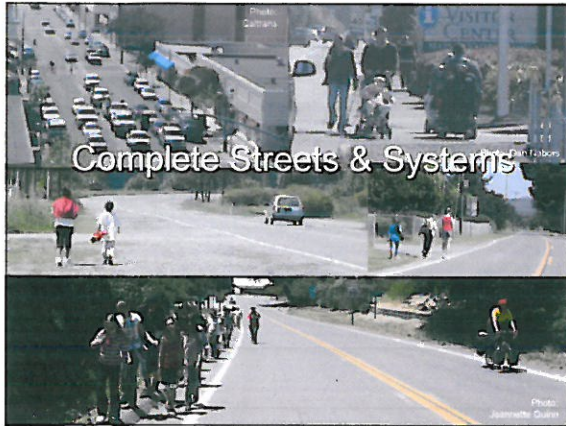
Complete Streets Working Group
Policy Recommendations
Circulation Element
Humboldt County General Plan

Presentation by:
Emily Sinkhorn, Planner
Natural Resources Services Division, RCAA
Noelle Melchizedek, Senior Planner
Natural Resources Services Division, RCAA



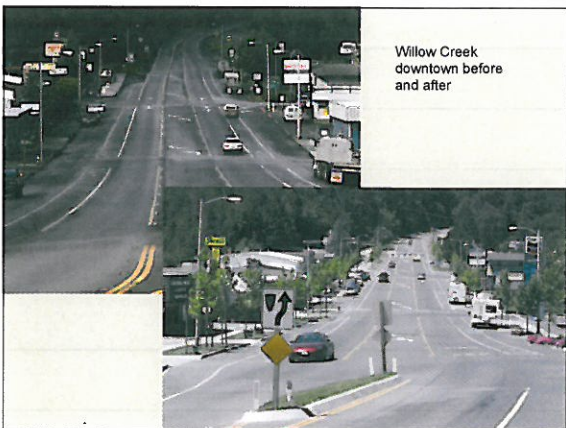
Key Concepts

- Transportation Security
- Complete Streets
- Federal funding opportunities
- Level of Service / Quality of Service



Complete Streets

- Balance and integrate all modes in the transportation system
- Complete Streets are designed and operated to enable safe access for all users
- Context-specific
 - C-G2 – Balanced Transportation Opportunities – “ensures the availability of options among modes of travel”
 - C-P11 – Roadway Functional Classifications
 - C-P17A – US Highway 101 Safety Corridor Improvements
 - C-P26 – Bicycles and Pedestrian Facilities in New Subdivisions
 - C-P31 – Design Standards for All Pathways
 - C-IM5 (our additions) – Multimodal infrastructure improvements are prioritized



Contact Information

- Noelle Melchizedek:
 - 707-269-2056
 - noelle@nrsrcaa.org
- Emily Sinkhorn:
 - 707-269-2061
 - emily@nrsrcaa.org
