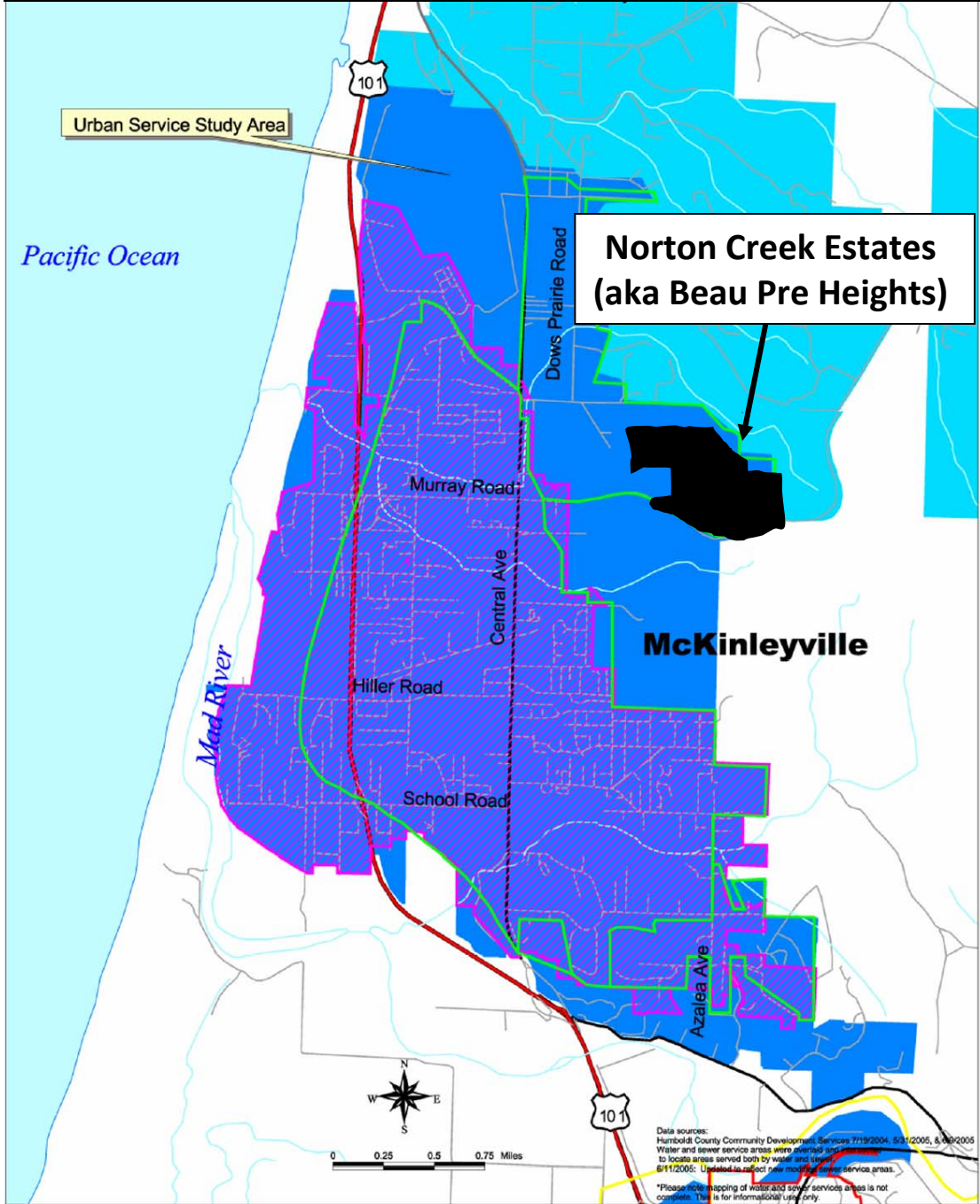


Leapfrog Development: Planned or Unplanned Expansion?

The GPU should include policies that govern the timing of expansion, as well as findings that must be made to annex areas in the UEAs to the UDAs. Otherwise, the result will be continued “leapfrog” development, such as the low-density residential subdivision that was approved on this parcel in the Agricultural General Zone.



McKinleyville

- City Boundary
- Sphere of Influence
- Current Water and Sewer service areas (includes planned areas)*
- McKinleyville Urban Developed/Expansion Areas

- Urban Study Areas**
- Urban Service Study Area (sewer & water)
 - Water Study Area
 - Potential Water Study Area

- ~ Stream
- = Freeway
- = Highway
- = Roads

Data sources:
Humboldt County Community Development Services 7/19/2004, 6/3/2005, & 6/29/2005
Water and sewer service areas were reviewed and updated to locate areas served both by water and sewer service areas.
6/11/2005: Updated to reflect new modeling of sewer service areas.
*Please note mapping of water and sewer service areas is not complete. This is for informational use only.