

Humboldt County Fire Safe Council Meeting Materials

For the meeting of August 14, 2025

Agenda Item 5. Consent Agenda

- *Consent Agenda Project Descriptions and Maps*
 - Project descriptions and maps are provided for proposed updates to the CWPP GIS database of projects.
 - Reminder:
 - The HCFSC maintains a [CWPP WebGIS Database](#) of projects intended to be a "living" component of the CWPP. Keeping it updated enables project planning among partners across the county and allows projects to be referenced in requests for funding. The [HCFSC Project Input and Update Process](#) describes how projects are added and by whom.
 - Once a motion has been made to approve items on the Consent Agenda, any voting member may ask that a project proposal be pulled for further discussion. Staff, with support from the proposer group (if present), will provide further detail about the proposal and a separate vote will be held for that item.

Proposed CWPP Project Database Updates

ADDITIONS:

[MAP 1](#): Salmon Creek Ingress and Egress – Proposed Addition

- CWPP Planning Unit: Mattole Lost Coast
- Proposer: Mattole Restoration Council
- Description: Addition of a proposed project area in the Close Out / Reporting phase. See input form for details.

UPDATES (Treatments Completed):

Mattole Restoration Council

- PET063
- PET038
- PET032

Humboldt County Resource Conservation District

- GAR043
- GAR072

Planning Partner CWPP Project Input Form

Submitted Time: July 22, 2025 12:19 PM

Request Type

What would you like to do?

Add a Proposed or Completed Project

Submittee Information

Name

Charlotte Favre

Organization

Humboldt Resource Conservation
District

Email

charlotte@hcrd.org

Project Approval

Check this box if your submission
has been approved by the organization
listed above.

Project Information

Planning Unit

I4 Avenue of the Giants

Feature Subtype

fuels reduction

Feature Description

fuels reduction

Feature Location

Salmon Creek watershed

Project Name (if applicable)

Salmon Creek Ingress &
Egress Fuels Reduction
Project

Project Status

Closeout / Reporting

Project Type

Roadside Vegetation Management

Treatment Method

Hand crews, Chipping

Vegetation Type

Mixed conifer, Oak
woodland

Maintenance Schedule

Unsure

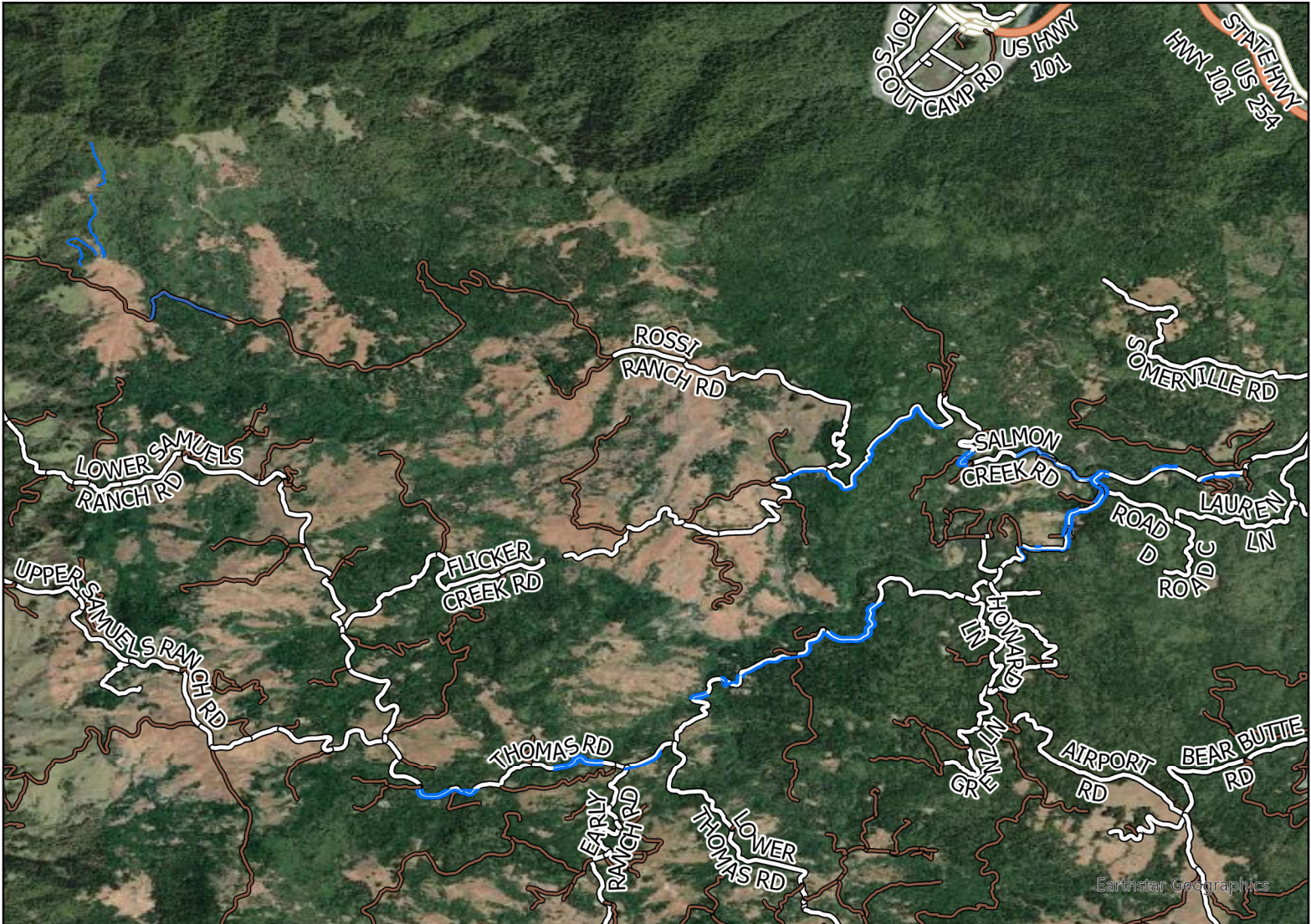
Secured Funding Source

None









**Aug 2025
Humboldt County
Fire Safe Council Meeting**

**Resource Conservation
District**
CWPP Project Database Update
MAP 1

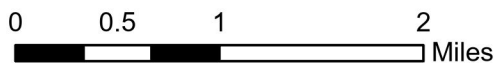


Earthstar Geographics

Legend

-  Salmon Creek Ingress and Egress
- FUNCTIONAL**
-  Principal Arterials
-  Minor Arterials
-  Major Collectors
-  Minor Collectors
-  Local Roads
-  Private or Unclassified

Note: Not all projects are labeled



**Project Addition:
Avenue of the Giants Planning Unit**

Description: Roadside vegetation management
Proposed feature ID: AVE008

Humboldt
County

