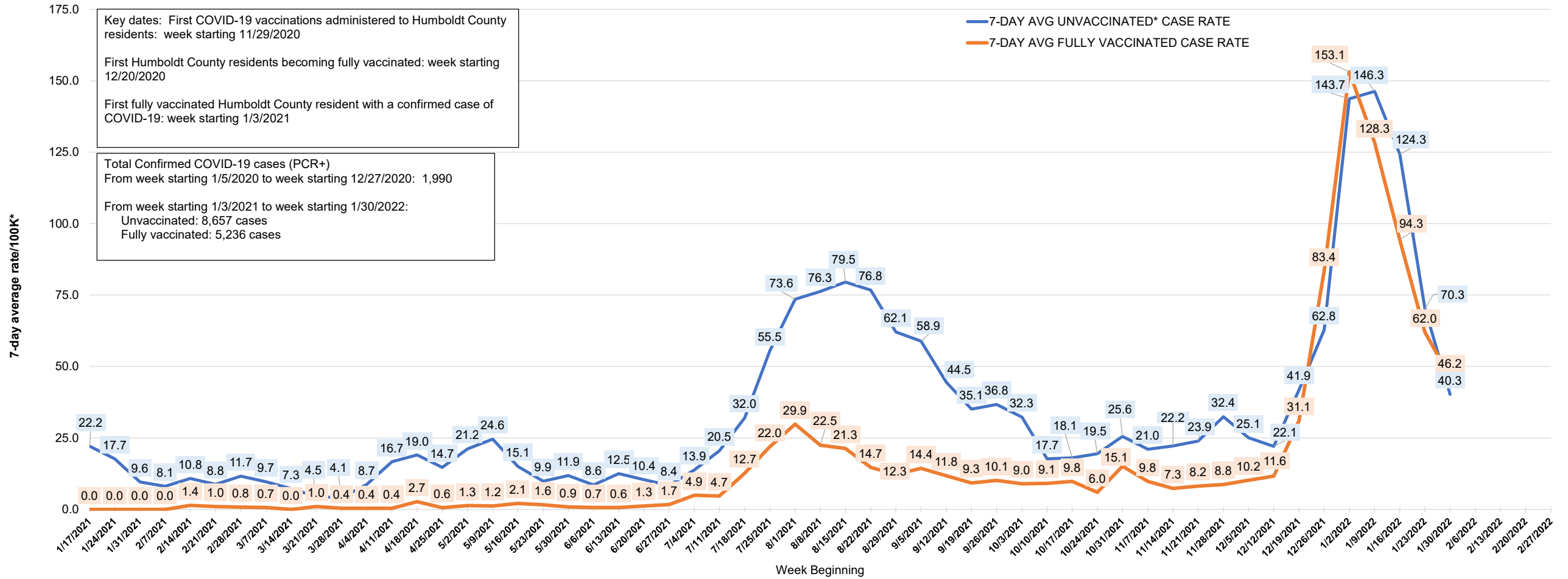


Estimated Humboldt County 7-day average rate per 100,000* newly confirmed COVID-19 cases, vaccinated versus unvaccinated, from week beginning 1/17/2021 to week beginning 1/30/2022 (provisional and subject to change)



*Total persons vaccinated and unvaccinated by week or month are used as population denominators. Unvaccinated population includes persons with one dose of a two dose vaccine (partially vaccinated)



Source: Humboldt County Vital Statistics. Query date 2/10/2022