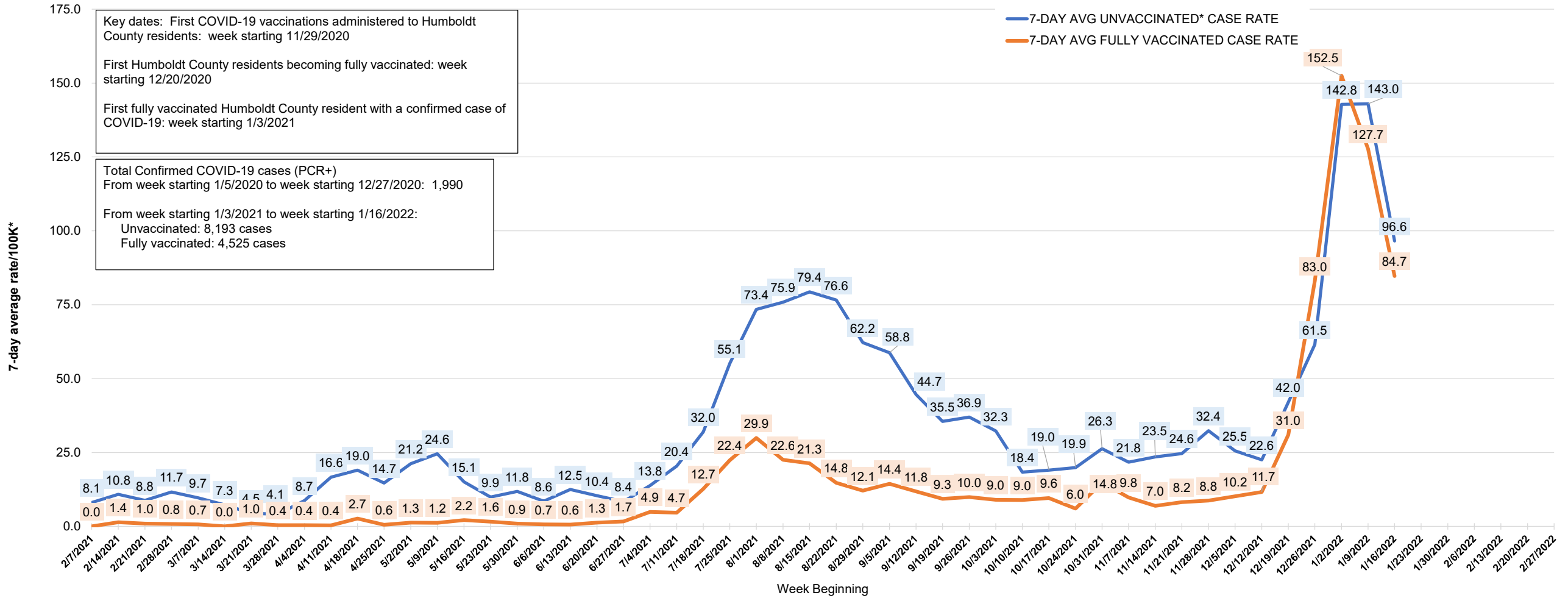


Estimated Humboldt County 7-day average rate per 100,000\* newly confirmed COVID-19 cases, vaccinated versus unvaccinated, from week beginning 1/16/2021 to 1/16/2022 (provisional and subject to change)



\*Total persons vaccinated and unvaccinated by week or month are used as population denominators. Unvaccinated population includes persons with one dose of a two dose vaccine (partially vaccinated)



Source: Humboldt County Vital Statistics. Query date 1/27/2022

Prepared by:  
 Humboldt Public Health Epidemiology program  
 EpidemiologyProgram@co.humboldt.ca.us  
 1/27/2022 V.6