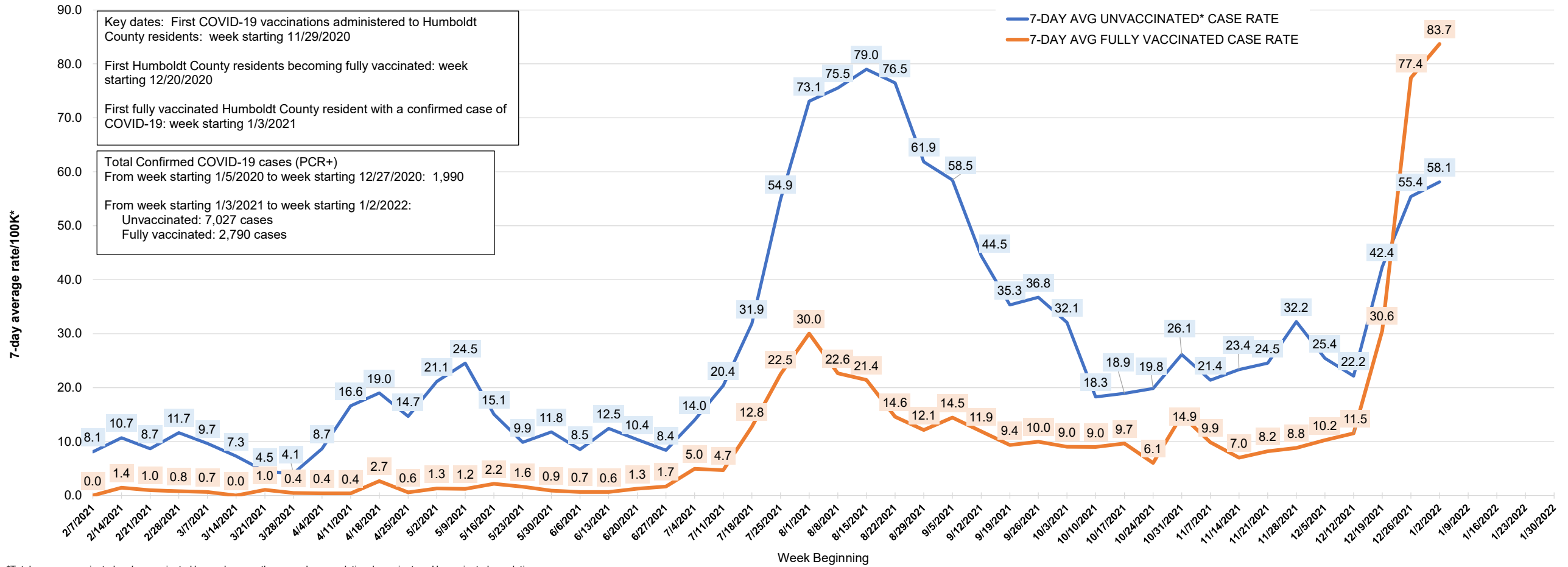


Estimated Humboldt County 7-day average rate per 100,000\* newly confirmed COVID-19 cases, vaccinated versus unvaccinated, from week beginning 1/3/2021 to 1/2/2022 (provisional and subject to change)



\*Total persons vaccinated and unvaccinated by week or month are used as population denominators. Unvaccinated population includes persons with one dose of a two dose vaccine (partially vaccinated)

