



DEPARTMENT OF AGRICULTURE
COUNTY OF HUMBOLDT

5630 SOUTH BROADWAY EUREKA, CALIFORNIA 95503
PHONE (707) 441-5260

A. G. Kawamura, Secretary

California Department of Food and Agriculture
and

Honorable Board of Supervisors, Humboldt County

Jill Geist, Chair

Bonnie Neely

Jimmy Smith

Roger Rodoni

John Woolley

I am pleased to present Humboldt County's Crop and Livestock Report in accordance with Sections 2272 and 2279 of the California Food and Agricultural Code. The following summary represents gross agricultural receipts for the year 2004 but does not reflect production costs or net income to the producers.

Humboldt County recorded a value of \$295,296,200 for its total gross agricultural production in 2004. This represents an increase of \$32.5 million over 2003 production. Our greatest increases are related to the value of harvested timber, which is up over \$26 million and nursery production, which is up more than \$5 million. All other commodity groups, except livestock & poultry and field crops, reported production gains. Our leading agricultural commodities are ranked as follows:

<i>Timber Production</i>	\$	<i>174,456,900</i>
<i>Milk and Milk Products</i>	\$	<i>45,721,000</i>
<i>Nursery Stock (cut flowers, ornamental and forest tree production)</i>	\$	<i>40,793,400</i>
<i>Livestock (beef cattle & calves, dairy cows, sheep & lambs, etc.)</i>\$	<i>23,468,800</i>
<i>Field Crops (alfalfa, silage, range, etc.)</i>	\$	<i>9,261,100</i>
<i>Vegetable Crops</i>	\$	<i>880,700</i>
<i>Fruit & Nut Crops</i>\$	<i>714,300</i>

A word of personal thanks goes to my office staff, the County's Agricultural Industry, participating agencies and to all whose expertise and cooperation made this report possible.

Respectfully submitted,

John E. Falkenstrom

John E. Falkenstrom
Acting Agricultural Commissioner

FIELD CROPS

ITEM	YR.	HARVEST ACREAGE	PRODUCTION		UNIT	PER UNIT	VALUE TOTAL
			PER ACRE	TOTAL			
Hay (All)	2004	1,800	3.35	6,030	Ton	115.00	693,450
	2003	1,956	3.60	7,042	Ton	110.00	774,600
Silage (All)	2004	850	20.00	17,000	Ton	42.00	595,000
	2003	960	22.00	19,200	Ton	35.00	806,400
Pasture (All)	2004	21,000			Acre	145.00	3,272,650
	2003	21,000			Acre	145.00	3,045,000
Range	2004	470,000			Acre	10.00	4,700,000
	2003	470,000			Acre	10.00	4,700,000

Includes: Alfalfa, grass, clover

Totals	2004	9,261,100
	2003	9,326,000

VEGETABLE CROPS

ITEM	YEAR	TOTAL VALUE
Vegetable Crops	2004	880,700
	2003	868,000

Includes: Corn, potatoes, pumpkins, tomatoes, squash, cabbage, beans, peppers, mushrooms, alfalfa sprouts, etc.

FRUIT AND NUT CROPS

ITEM	YEAR	TOTAL VALUE
Miscellaneous Fruits and Nuts	2004	714,300
	2003	698,000

Includes: apples, berries, cherries, chestnuts, figs, peaches, walnuts and grapes (wine/table)

NURSERY PRODUCTION

ITEM	YEAR	TOTAL VALUE
------	------	----------------

Cut flowers and decoratives, bedding plants, ornamentals and forest nursery tree production	2004	40,793,400
	2003	35,858,600

ITEM	YR.	PRODUCTION	UNIT	VALUE TOTAL
------	-----	------------	------	----------------

TIMBER

Timber ¹ Production (All)	2004	396,500,000	Board Feet	169,122,000
	2003	383,675,000	Board Feet	142,830,400
Biomass & ² Composting	2004	410,377	Ton	5,334,900
	2003	346,255	Ton	5,194,000

¹ Total includes softwood saw logs and miscellaneous products (Christmas trees, cull logs, fuel wood, pulp chips, hardwood logs, poles and pilings and miscellaneous small saw logs).

² Biomass and Composting data were compiled for the first time in 2002.

TOTAL:	2004	174,456,900
	2003	148,024,400

LIVESTOCK & POULTRY

ITEM	YR.	NO. OF HEAD	TOT. LIVE WT.	UNIT	VALUE PER UNIT	TOTAL
¹ Beef Cattle and Calves	2004	27,200	149,600	CWT	88.30	13,209,700
	2003	29,300	161,150	CWT	89.90	14,487,400
Dairy Cows and Calves (all)	2004	20,500		HEAD		6,336,000
	2003	22,000		HEAD		5,904,000
Sheep and Lambs (all)	2004	4,100	4,250	CWT	90.40	384,200
	2003	5,800	5,800	CWT	88.00	510,400
² Misc.	2004					3,538,900
	2003					3,538,900

TOTAL:	2004	23,468,800
	2003	24,872,700

¹ Includes: Cows, calves, bulls, steers

² Includes: Aquaculture, chickens, turkey, swine, goats, etc.

LIVESTOCK & POULTRY PRODUCTS

ITEM	YEAR	PRODUCTION	UNIT	PER UNIT	VALUE TOTAL
Market Milk	2004	2,050,181	CWT	15.62	32,024,000
	2003	2,833,550	CWT	11.76	33,323,000
Manufacturing Milk	2004	868,561	CWT	15.20	13,202,000
	2002	823,763	CWT	11.82	9,737,000
Misc. ¹	2004				495,000
	2003				110,300

TOTAL:	2004	45,721,000
	2003	43,170,300

¹ Includes: Wool, apiary and dairy goat products

ORGANIC AND CERTIFIED PRODUCERS

ITEM	YEAR	NO. REGISTRANTS	EST. ACRES
Organic Registrants	2004	72	
	2003	70	
Certified Producers	2004	142	624*
	2003	133	460*
Farmer's Markets	2004	12	
	2003	9	

CROPS: Beans, berries, cabbage, carrots, cherries, corn, cucumbers, garlic, herbs, flowers, lettuce, melons, mushrooms, onions, peaches, peas, potatoes, pumpkins, sprouts, squash, tomatoes, etc.

*Includes acreage associated with organic hay, pasture and silage production.

RECAPITULATION

ITEM	YEAR	
	<u>2004</u>	<u>2003</u>
Field Crops	\$ 9,261,100	\$ 9,326,000
Vegetable Crops	\$ 880,700	\$ 868,000
Fruit & Nut Crops	\$ 714,300	\$ 698,000
Nursery Production	\$ 40,793,400	\$ 35,858,600
Livestock & Poultry	\$ 23,468,800	\$ 24,872,700
Livestock & Poultry Products	\$ 45,721,000	\$ 43,170,300
Timber	\$174,456,900	\$148,024,400
GRAND TOTALS	\$ 295,296,200	\$ 262,818,000

**HUMBOLDT COUNTY
2004 SUSTAINABLE AGRICULTURE REPORT**

The implementation of agricultural practices and programs which promote the economic viability of agriculture while minimizing the impacts of these practices and programs on natural resources and the environment is sustainable agriculture. The scope of Humboldt County's biological control programs and organic farming practices are summarized below.

COUNTY BIOLOGICAL CONTROL

PEST	AGENT/MECHANISM	2004	2003
TANSY RAGWORT (<i>Senecio jacobaea</i>)	Ragwort flea beetle (<i>Longitarsus jacobaeae</i>)	4 sites	4 sites
YELLOWSTAR THISTLE (<i>Centaurea solstitialis</i>)	Seed-head weevil (<i>Bangasternus orientalis</i>)	14 sites	14 sites
	Gall fly (<i>Urophora sirunaseva</i>)	5 sites	5 sites
	Hairy weevil (<i>Eustenopus villosus</i>)	1 site	24 sites
	Fungus (<i>Puccinia jaceae</i> var. <i>solstitialis</i>)	2 sites	
KLAMATH WEED (<i>Hypericum perforatum</i>)	Leaf & root weevil (<i>Chrysolina quadrigemina</i>) (= <i>C. gemellata</i>)		Countywide
BULL THISTLE (<i>Cirsium vulgare</i>)	Bull Thistle Gall Fly (<i>Urophora stylata</i>)	9 sites	9 sites
CANADA THISTLE (<i>Cirsium arvense</i>)	Gall Fly (<i>Urophora cardui</i>)	2 sites	2 sites
ITALIAN THISTLE (<i>Carduus pycnocephalus</i>)	Seed weevil (<i>Rhinocyllus conicus</i>)	1 site	1 site



PEST EXCLUSION involves the systematic inspection of incoming shipments of plant materials and other high-risk articles, which enter Humboldt County at post offices and other terminals (truck lines, United Parcel, air freight, and commercial vessels, etc.). The primary objective is to prevent the introduction into Humboldt County of plant diseases, insects, nematodes, weeds or vertebrate pests which are or could prove to be detrimental to the local and state agricultural industry and natural environment.

PEST EXCLUSION

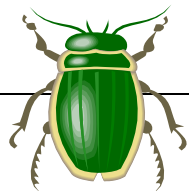
No. Inspections	2004 8,577	METHOD OF CONVEYANCE	No. Rejections	2004 105*
WILD GARLIC (Allium vineale)		UPS/Postal Shipments		0
CERTIFICATION/LABELING VIOLATIONS		UPS/Postal Shipments/FedEx		99
VARIOUS PLANT PESTS		UPS/Postal Shipments/FedEx		6
NOXIOUS WEEDS		UPS/Postal Shipments		0

* Shipments rejected and/or destroyed.

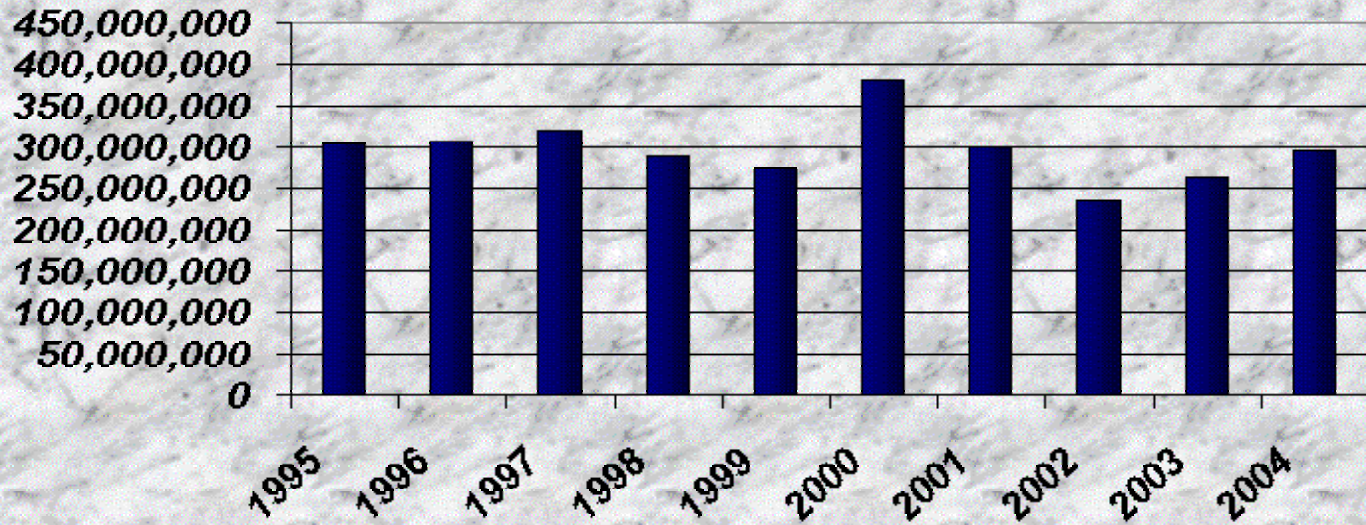
PEST DETECTION activities are focused on the search for pests, which are not known to exist in the State, or are of limited distribution throughout California. Detection trapping activities are conducted locally for insect pests such as Gypsy Moth and Japanese beetle. In addition, field surveys are continually being conducted throughout Humboldt County in order to locate and identify noxious weeds, plant diseases and vertebrate pests.

PEST DETECTION

TYPE	INSECT TRAPS	NO. SERVICINGS 2004
Gypsy Moth	286	1,260
Glassy-Winged Sharpshooter	117 (inspections)	844
Japanese Beetle	22	85



Humboldt County Agricultural Gross Values for the 1995-2004 Decade



	<u>1995</u>	<u>1996</u>	<u>1997</u>	<u>1998</u>	<u>1999</u>	<u>2000</u>	<u>2001</u>	<u>2002</u>	<u>2003</u>	<u>2004</u>
Field Crops	7,054,000	7,039,600	8,223,780	8,177,800	8,200,500	7,972,300	8,998,750	8,977,650	9,326,000	9,261,100
Vegetable Crops	836,000	836,000	897,000	676,000	763,208	814,190	952,000	987,800	868,000	880,700
Fruit/Nut Crops	27,000	27,000	78,000	91,000	111,567	430,246	506,850	683,100	698,000	714,300
Nursery Production	18,319,000	18,319,000	22,576,611	23,226,500	25,806,000	32,859,191	33,952,000	35,321,300	35,858,600	40,793,400
Livestock/Poultry	11,226,000	10,830,537	12,443,189	14,548,760	19,936,281	21,020,200	22,347,800	22,579,750	24,872,700	23,468,800
Livestock/Products	30,589,000	34,709,000	36,067,700	39,055,200	38,283,000	33,636,400	42,972,000	31,734,400	43,170,300	45,721,000
Timber	235,529,000	235,529,000	238,011,000	203,494,572	181,487,821	285,232,953	190,571,200	134,963,400	148,024,400	174,456,900
TOTAL	303,580,000	307,290,137	318,297,280	289,269,832	274,588,377	381,965,480	300,300,600	235,247,400	262,818,000	295,296,200