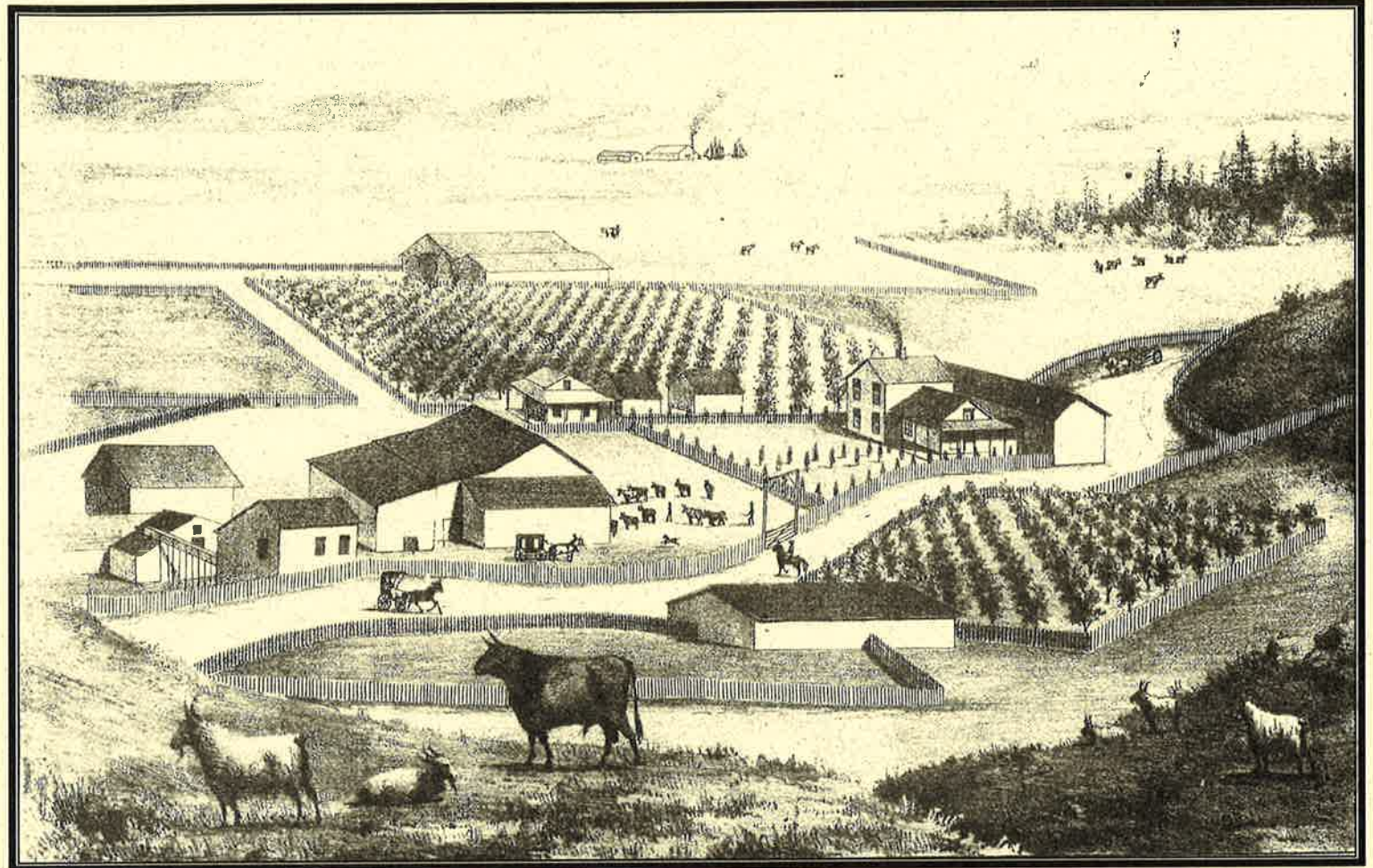


HUMBOLDT COUNTY DEPARTMENT OF AGRICULTURE



DAIRY, MILL & FARM ca 1860 from original pen & ink drawing

2002 CROP AND LIVESTOCK REPORT



IN DEDICATION

This 2002 Crop and Livestock Report is dedicated to retiring Senior Agricultural/Weights & Measures Inspector, Richard "Dick" Spadoni in recognition of his more than 27 years of service with the Humboldt County Department of Agriculture. Richard began his career with the county in 1975. His work responsibilities were focused on managing departmental programs related to Pest Prevention & Plant Regulation and Integrated Pest Management. Dick has always exhibited a keen curiosity and admirable work ethic. These qualities, along with his formal education in entomology and a philosophy of "opening a package and looking", enabled him to make hundreds of insect and other quarantined pest interceptions throughout his career; thus, preventing the possible introduction and spread of organisms detrimental to the natural and agricultural environments of Humboldt County and the State of California.

William (Bill) J. Lyons, Jr., Secretary
 California Department of Food and Agriculture
 and
Humboldt County Board of Supervisors



Jimmy Smith, Chairman, First District
 Roger Rodoni, Second District
 John Woolley, Third District
 Bonnie Neely, Fourth District
 Jill Geist, Fifth District

I am pleased to present Humboldt County's Crop and Livestock Report in accordance with Sections 2272 and 2279 of the California Food and Agricultural Code. The following summary represents gross agricultural receipts for the year 2002 but does not reflect production costs or net income to the producers.

The County's total gross value of agricultural production is \$235,247,400, which is a decrease of 21.66% from last year. Negative economic factors affected our livestock and dairy producer's gross receipts, however, our greatest decrease is related to the value of harvested timber. Humboldt County, nevertheless, continues to be ranked first in the state for timber production. Most other commodity groups reported gains over last year. Our leading agricultural commodities are ranked as follows.

Timber Production	\$	134,963,400
Nursery Stock (cut flowers, ornamental and forest tree production)	\$	35,321,300
Milk and Milk Products	\$	31,734,400
Livestock (beef cattle & calves, dairy cows, Sheep & lambs, etc.)	\$	22,579,750
Field Crops (alfalfa, silage, range, etc.)	\$	8,977,650
Vegetable Crops	\$	987,800
Fruit & Nut Crops	\$	683,100

A word of personal thanks goes to my office staff, the County's Agricultural Industry, participating agencies and to those individuals whose expertise and cooperation made this report possible.

Respectfully submitted,

John E. Falkenstrom
 Agricultural Commissioner

JEF:lp

FIELD CROPS

ITEM	YR.	HARVEST ACREAGE	PRODUCTION		UNIT	PER UNIT	VALUE TOTAL
			PER ACRE	TOTAL			
Hay (All)	2002	1500	4.00	6,000	Ton	95.00	570,000
	2001	1500	5.00	7,500	Ton	80.00	600,000
Silage (All)	2002	870	27.00	23,490	Ton	35.00	822,150
	2001	850	25.00	21,250	Ton	41.00	871,250
Pasture (All)	2002	19,900			Acre	145.00	2,885,500
	2001	19,500			Acre	145.00	2,827,500
Range	2002	470,000			Acre	10.00	4,700,000
	2001	470,000			Acre	10.00	4,700,000
Includes: Alfalfa, grass, clover, oats			TOTAL:				
						2002	8,977,650
						2001	8,998,750

VEGETABLE CROPS

ITEM	YEAR	VALUE TOTAL
Vegetable Crops	2002	987,800
	2001	952,000

Includes: Corn, potatoes, pumpkins, tomatoes, squash, cabbage, beans, peppers, mushrooms, alfalfa sprouts, etc.

FRUIT AND NUT CROPS

ITEM	YEAR	VALUE TOTAL
Miscellaneous Fruits and Nuts	2002	683,100
	2001	506,850
Includes: apples, berries, cherries, chestnuts, figs, peaches, walnuts and grapes (wine/table)		

NURSERY PRODUCTION

ITEM	YEAR	VALUE TOTAL
Cut flowers and decoratives, bedding plants, ornamentals and forest nursery tree production	2002	35,321,300
	2001	33,952,000

LIVESTOCK AND POULTRY PRODUCTS

ITEM	YEAR	PRODUCTION	UNIT	PER UNIT	VALUE TOTAL
Market Milk	2002	2,127,176	CWT	11.24	23,909,000
	2001	1,882,072		14.6527	5,722,000
Manufacturing Milk	2002	622,923	CWT	12.33	7,681,000
	2001	961,612		15.90	15,290,000
Wool ¹	2002				144,400
	2001				110,000

¹ Includes: Wool, mohair, apiary products

TOTAL:	2002	31,734,400
	2001	42,972,000

TIMBER

ITEM	YR.	PRODUCTION	UNIT	VALUE TOTAL
Timber ¹ Production (All)	2002	374,042,745	Board Feet	130,556,400
	2001	358,225,000	Board Feet	190,571,200
Biomass & ² Composting	2002	314,777	Ton	4,407,000

¹ Total includes softwood saw logs and miscellaneous products (Christmas trees, cull logs, fuel wood, pulp chips, hardwood logs, poles and pilings and miscellaneous small saw logs).

² Biomass and Composting data were compiled for the first time in 2002.

LIVESTOCK & POULTRY

ITEM	YR.	NO. OF HEAD	TOT. LIVE WT.	UNIT	VALUE PER UNIT	TOTAL
¹ Beef Cattle and Calves	2002	29,000	159,500	CWT	80.50	12,839,750
	2001	28,000	154,000	CWT	82.80	12,751,200
Dairy Cows and Calves (all)	2002	21,800		HEAD		6,104,000
	2001	20,700		HEAD		5,796,000
Sheep and Lambs (all)	2002	6,000	6,000	CWT	61.00	366,000
	2001	5,800	5,210	CWT	67.30	350,600
² Misc.	2002					3,270,000
	2001					3,450,000

TOTAL:	2002	22,579,750
	2001	22,347,800

¹ Includes: Cows, calves, bulls, steers

² Includes: Aquaculture, chickens, turkey, swine, goats, emus, rabbits, etc.

RECAPITULATION

ITEM	YEAR	
	2002	2001
Field Crops	\$ 8,977,650	\$ 8,998,750
Vegetable Crops	\$ 987,800	\$ 952,000
Fruit & Nut Crops	\$ 683,100	\$ 506,850
Nursery Production	\$ 35,321,300	\$ 33,952,000
Livestock & Poultry	\$ 22,579,750	\$ 22,347,800
Livestock & Poultry Products	\$ 31,734,400	\$ 42,972,000
Timber	\$ 134,963,400	\$ 190,571,200
GRAND TOTALS	\$ 235,247,400	\$300,300,600

PEST EXCLUSION involves the systematic inspection of incoming shipments of plant materials and other high risk articles which enter Humboldt County at post offices and other terminals (truck lines, United Parcel, air freight, and commercial vessels, etc.). The primary objective is to prevent the introduction into Humboldt County of plant diseases, insects, nematodes, weeds or vertebrate pests which are or could prove to be detrimental to the local and state agricultural industry and natural environment.

PEST EXCLUSION

No. Inspections	2002 9,180	METHOD OF CONVEYANCE	2002 No. Rejections 44*
WILD GARLIC (Allium vineale)		UPS/Postal Shipments	1
CERTIFICATION/LABELING VIOLATIONS		UPS/Postal Shipments/FedEx	36
VARIOUS PLANT PESTS		UPS/Postal Shipments/FedEx	2
NOXIOUS WEEDS		UPS/Postal Shipments	5

* Shipments rejected and/or destroyed.

PEST DETECTION activities are focused on the search for pests which are not known to exist in the State or are of limited distribution throughout California. Detection trapping activities are conducted locally for insect pests such as Gypsy Moth and Japanese Beetle. In addition, field surveys are continually being conducted throughout Humboldt County in order to locate and identify noxious weeds, plant diseases and vertebrate pests.

PEST DETECTION

TYPE	INSECT TRAPS	NO. SERVICINGS 2002
Gypsy Moth	200	1,000
Glassy-Winged Sharpshooter	23 (inspections)	
Japanese Beetle	10	50

**HUMBOLDT COUNTY
2002 SUSTAINABLE AGRICULTURE REPORT**

The implementation of agricultural practices and programs which promote the economic viability of agriculture while minimizing the impacts of these practices and programs on natural resources and the environment is sustainable agriculture. The scope of Humboldt County's biological control programs and organic farming practices are summarized below.

COUNTY BIOLOGICAL CONTROL

PEST	AGENT/MECHANISM	2002
TANSY RAGWORT (Senecio jacobaea)	Ragwort flea beetle (Longitarsus jacobaeae)	4 sites
YELLOWSTAR THISTLE (Centaurea solstitialis)	Seed-head weevil (Bangasternus orientalis)	14 sites
	Gall fly (Urophora sirunaseva)	5 sites
	Hairy weevil (Eustenopus villosus)	24 sites
KLAMATH WEED (Hypericum perforatum)	Leaf & root weevil (Chrysolina quadrigemina) (= C. gemellata)	Countywide
BULL THISTLE (Crisium vulgare)	Bull Thistle Gall Fly (Urophora stylata)	9 sites
CANADA THISTLE (Cilsium arvense)	Gall Fly (Urophora cardui)	2 sites
ITALIAN THISTLE (Carduus pycnocephalus)	Seed weevil (Rhinocyllus conicus)	1 site

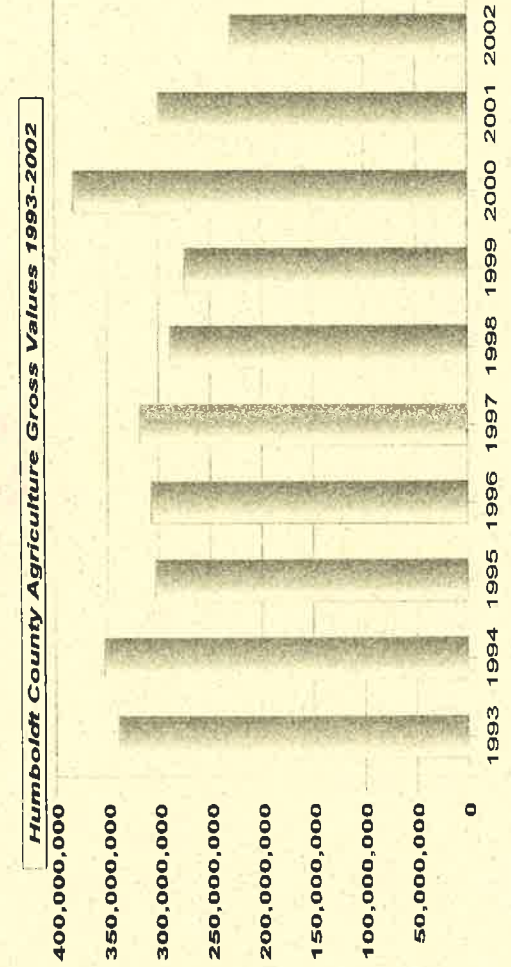
ORGANIC AND CERTIFIED PRODUCERS

Item	Year	No. Registrants	Est. Acres
Organic Registrants	2002	63	
	2001	58	
Certified Producers	2002	131	291
	2001	138	296
Farmer's Markets	2002	8	
	2001	9	

CROPS: Beans, berries, cabbage, carrots, cherries, corn, cucumbers, garlic, herbs, flowers, lettuce, melons, mushrooms, onions, peaches, peas, potatoes, pumpkins, sprouts, squash, tomatoes, etc.

**HUMBOLDT COUNTY AGRICULTURAL GROSS VALUES
FOR THE 1993-2002 DECADE**

Commodity Group	1993	1994	1995	1996	1997	1998	1999	2000	2001	2002
Field Crops	7,411,000	7,379,000	7,054,000	7,039,600	8,223,780	8,177,800	8,200,500	7,972,300	8,998,750	8,977,650
Vegetable Crops	1,103,000	872,000	836,000	836,000	897,000	676,000	763,208	814,190	952,000	987,800
Fruit/Nut Crops	100,000	32,000	27,000	27,000	78,000	91,000	111,568	430,246	506,850	683,100
Nursery Stock	20,940,000	20,274,000	18,319,000	18,319,000	22,576,611	23,226,500	25,806,000	32,859,191	33,952,000	35,321,300
Livestock/ Poultry	15,289,000	12,278,000	11,226,000	10,830,537	12,443,189	14,548,760	19,936,281	21,020,200	22,347,800	22,579,750
Livestock/ Poultry Products	27,065,000	30,681,000	30,589,000	34,709,000	36,067,700	39,055,200	38,283,000	33,636,400	42,972,000	31,734,400
Misc. Products/ Timber	268,010,000	281,780,000	235,529,000	235,529,000	238,011,000	203,494,572	181,487,821	285,232,953	190,571,200	134,963,400
TOTAL	339,918,000	353,296,000	303,580,000	307,290,137	318,297,330	289,269,832	274,588,378	381,965,480	300,198,600	235,247,400



Humboldt County Agriculture Gross Values 1993-2002